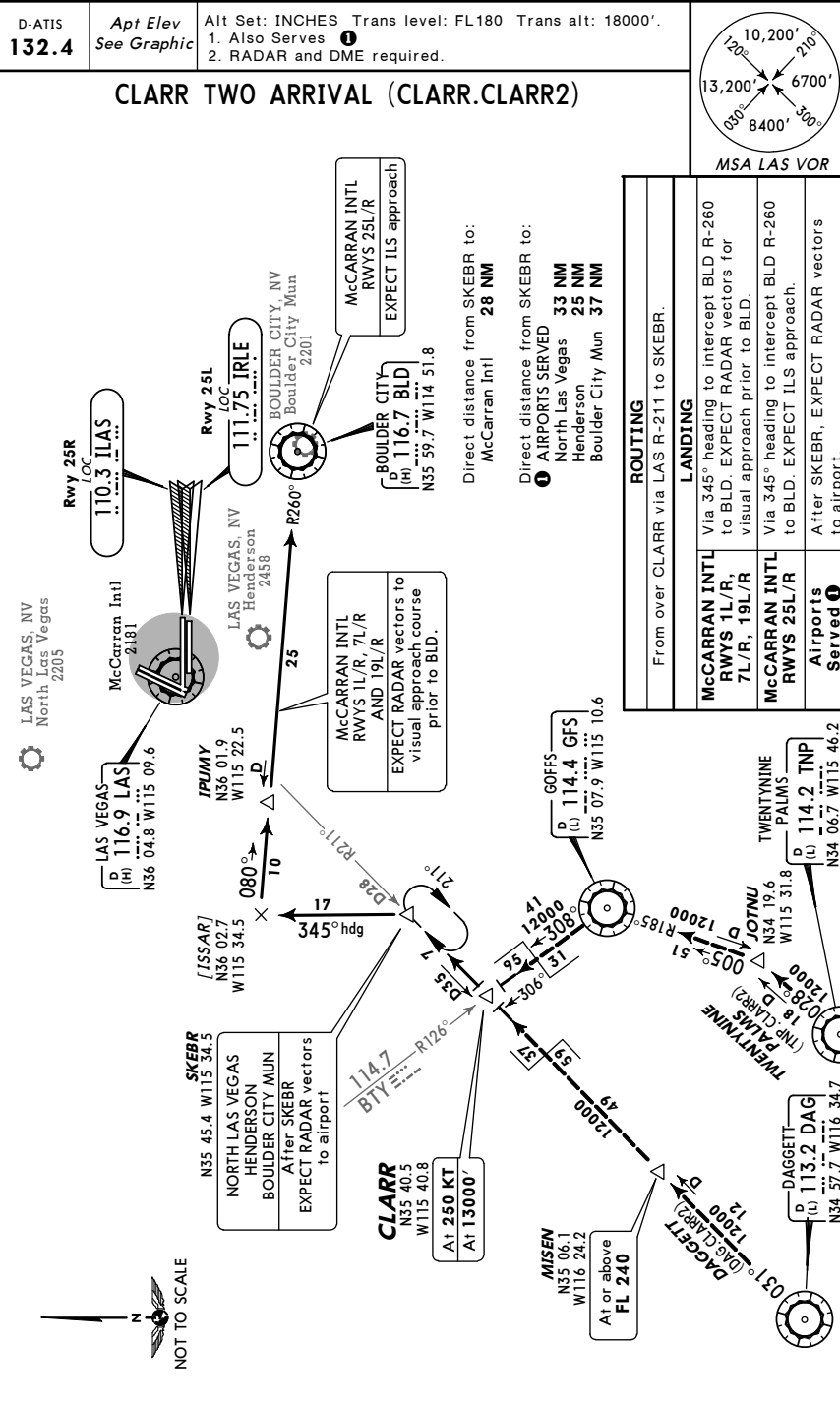


FOR OPERATING RULES AND PILOT AND EQUIPMENT REQUIREMENTS SEE FAR 91.131, 91.117 AND 91.215.

**FLIGHT PROCEDURES**

- IFR Flights-Aircraft within Class B airspace are required to operate in accordance with current IFR procedures.
- VFR Flights-
- Arriving aircraft should contact Las Vegas Approach Control on the specified frequencies. Although arriving aircraft may be operating beneath the floor of Class B airspace on initial contact, communications should be established with Approach Control for sequencing and spacing purposes.
  - Aircraft departing the primary airport are requested to advise clearance delivery prior to taxiing of their intended altitude and direction of flight to depart Class B airspace. Aircraft departing from other than McCarran International Airport whose route of flight would penetrate Class B airspace should give this information to ATC on appropriate frequencies.
  - Aircraft desiring to transit Class B airspace may obtain an ATC clearance and will be handled on an equitable "First-come, first-served" basis, provided the requirements of FAR 91 are met.

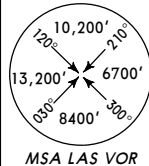


KLAS/LAS  
McCARRAN INTL

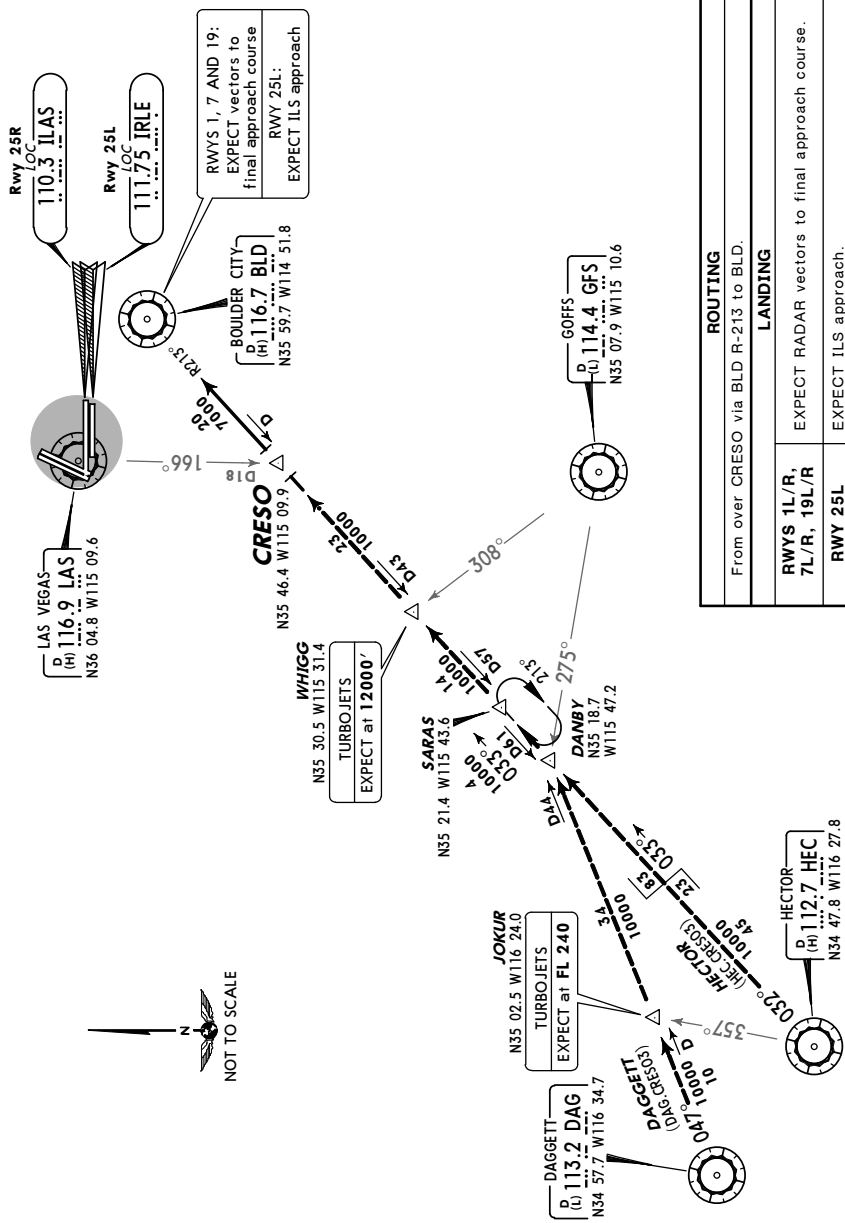
JEPPESEN  
4 JUN 04 (10-2A) Eff 10 Jun

LAS VEGAS, NEV  
STAR

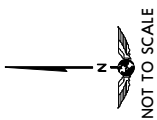
D-ATIS **132.4** Apt Elev **2181'** Alt Set: INCHES Trans level: FL180 Trans alt: 18000'



CRESO THREE ARRIVAL (CRESO.CRESO3)



ROUTING	
From over CRESO via BLD R-213 to BLD.	
LANDING	
RWYS 1L/R, 7L/R, 19L/R	EXPECT RADAR vectors to final approach course.
RWY 25L	EXPECT ILS approach.

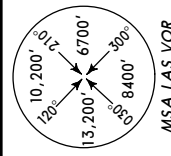


KLAS/LAS  
McCARRAN INTL

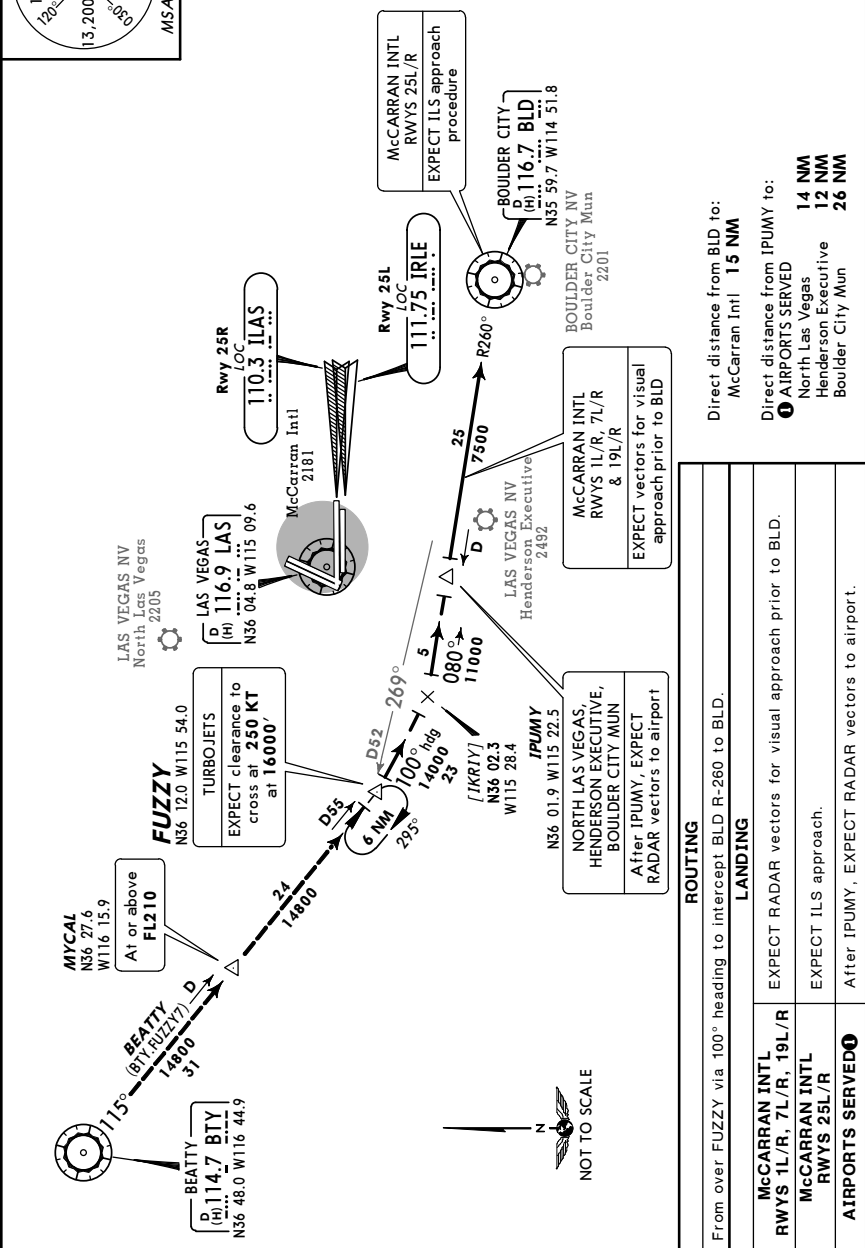
JEPPESEN  
11 JAN 08 (10-2B)

LAS VEGAS, NEV  
STAR

D-ATIS **132.4** Apt Elev *See Graphic* Alt Set: INCHES Trans level: FL180 Trans alt: 18000'  
1. Also Serves **1**  
2. RADAR and DME required.

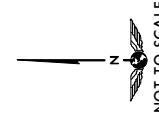


FUZZY SEVEN ARRIVAL (FUZZY.FUZZY7)



ROUTING	
From over FUZZY via 100° heading to intercept BLD R-280 to BLD.	
LANDING	
MCCARRAN INTL RWYS 1L/R, 7L/R, 19L/R	EXPECT RADAR vectors for visual approach prior to BLD.
MCCARRAN INTL RWYS 25L/R	EXPECT ILS approach.
AIRPORTS SERVED <b>1</b>	After IPUMY, EXPECT RADAR vectors to airport.

Direct distance from BLD to:  
McCarran Intl **15 NM**  
Direct distance from IPUMY to:  
**1** AIRPORTS SERVED  
North Las Vegas **14 NM**  
Henderson Executive **12 NM**  
Boulder City Mun **26 NM**



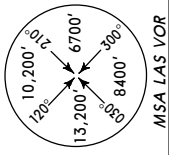
KLAS/LAS  
McCARRAN INTL

JEPPESEN  
11 JAN 08 (10-2C)

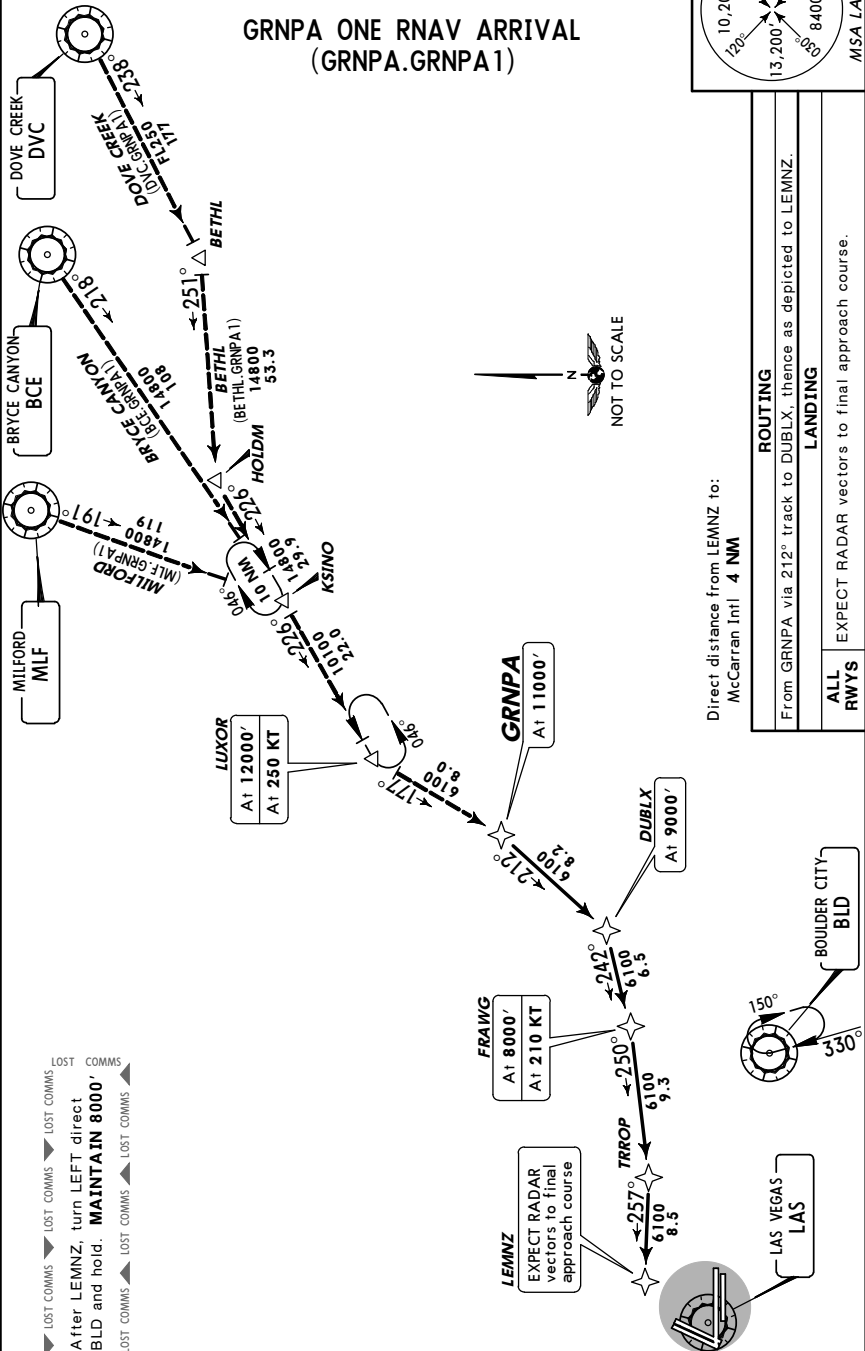
LAS VEGAS, NEV  
RNAV STAR

D-ATIS  
**132.4**

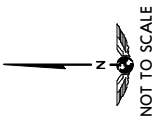
Apt Elev  
**2181'**  
Alt Set: INCHES Trans level: FL180 Trans alt: 18000'  
1. RADAR required. 2. DME/DME/IRU or GPS required.  
3. RNAV 1.



GRNPA ONE RNAV ARRIVAL  
(GRNPA.GRNPA1)



LOST COMMS  
After LEMNZ, turn LEFT direct BLD and hold. MAINTAIN 8000'  
LOST COMMS



KLAS/LAS  
McCARRAN INTL

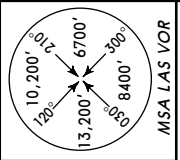
JEPPESEN  
8 FEB 08 (10-2D) Eff 14 Feb

LAS VEGAS, NEV  
STAR

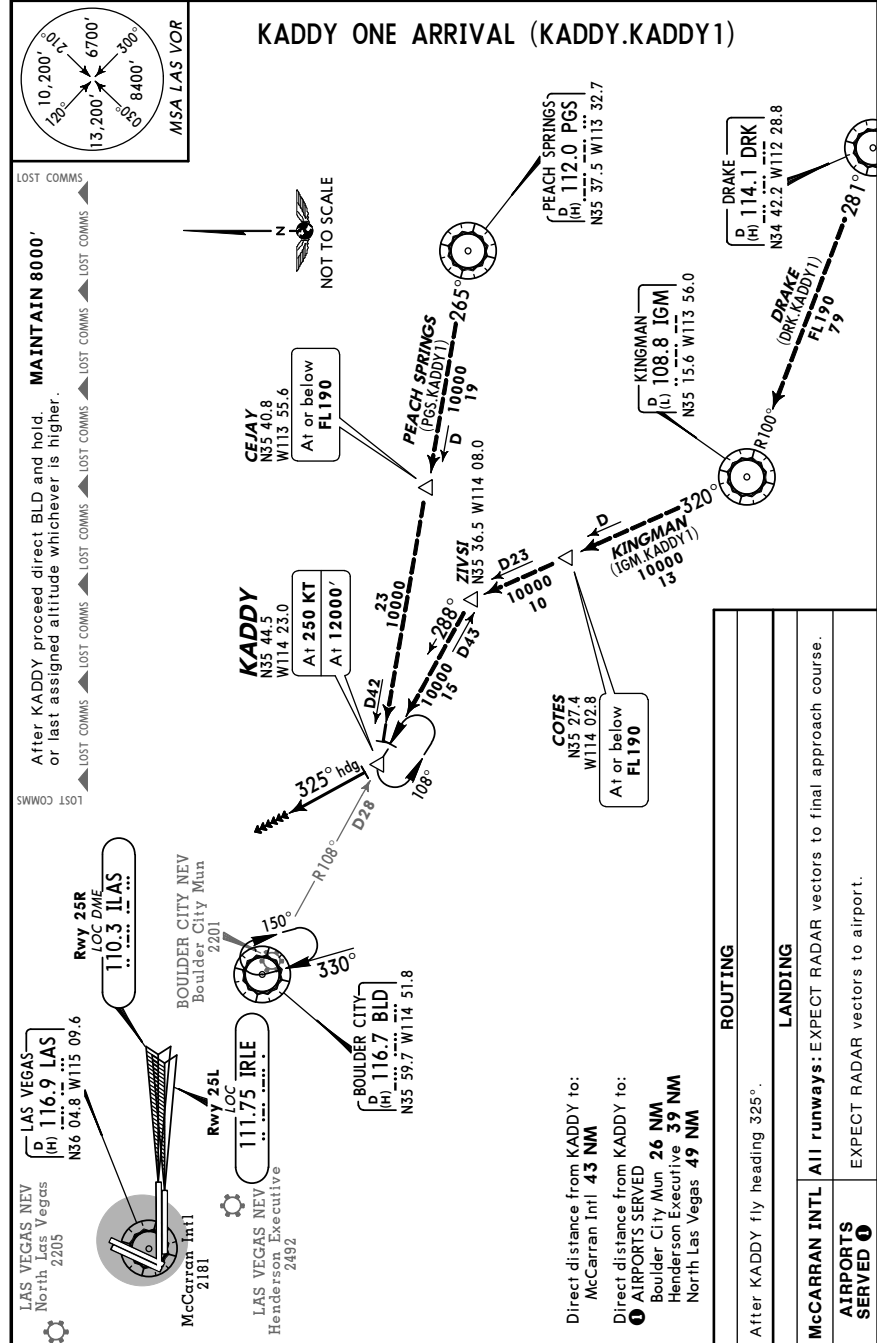
McCARRAN INTL  
D-ATIS  
Arrival  
**132.4**

Apt Elev  
See Graphic

Alt Set: INCHES Trans level: FL180 Trans alt: 18000'  
1. Also Serves 1  
2. RADAR and DME required.



KADDY ONE ARRIVAL (KADDY.KADDY1)

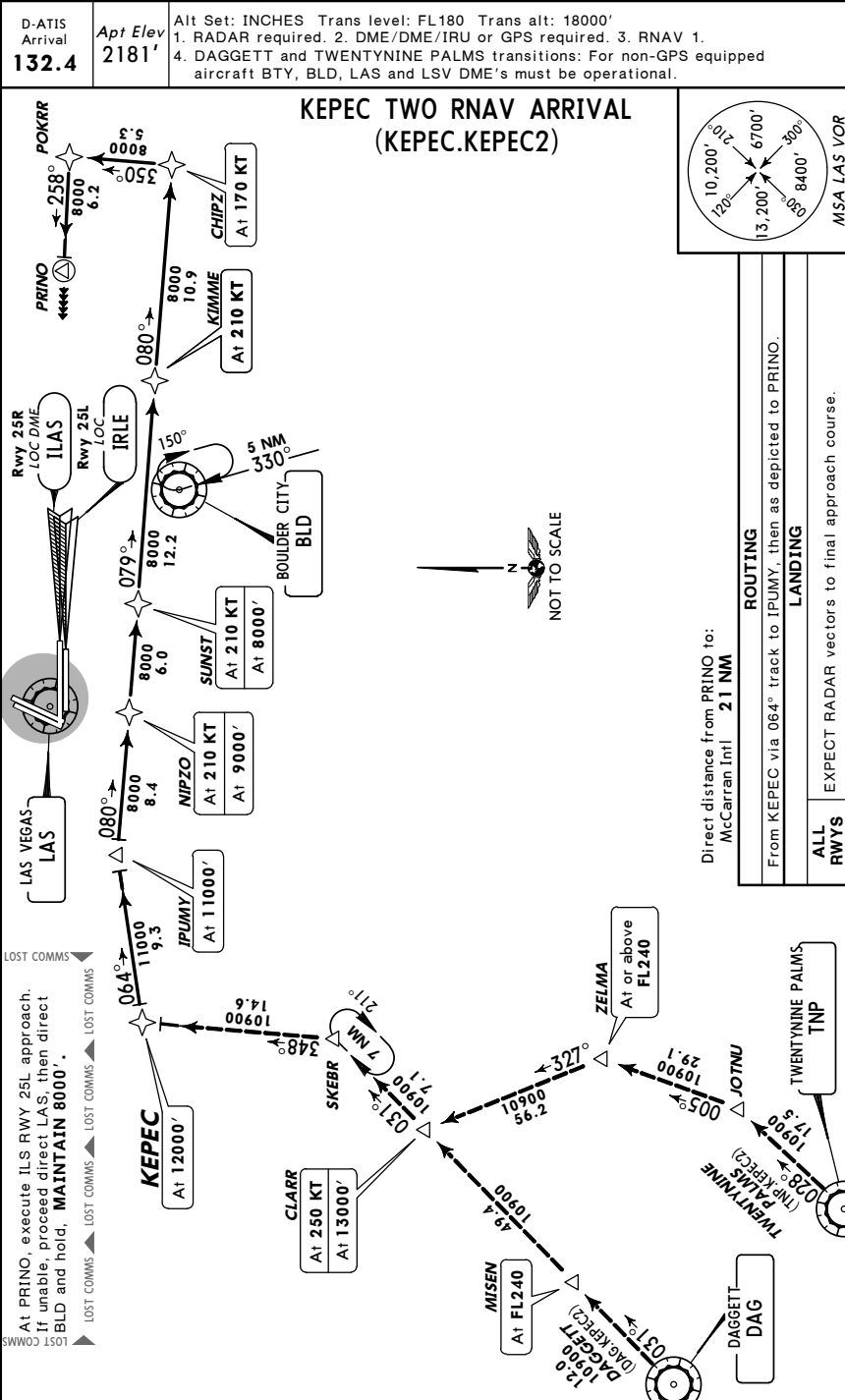


LOST COMMS  
After KADDY proceed direct BLD and hold. MAINTAIN 8000' or last assigned altitude whichever is higher.  
LOST COMMS

KLAS/LAS  
 McCARRAN INTL

JEPPESEN  
 8 FEB 08 (10-2E) Eff 14 Feb

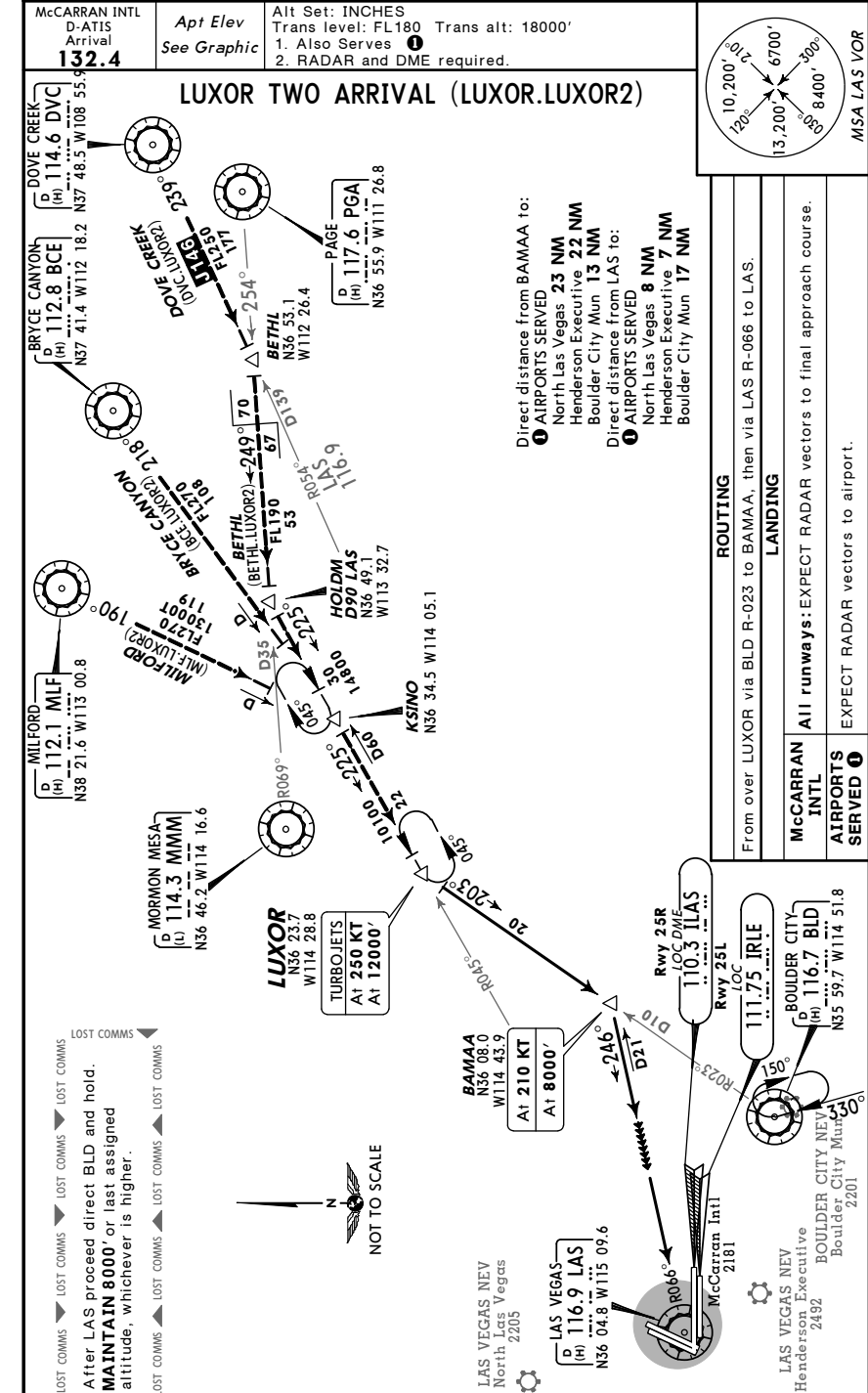
LAS VEGAS, NEV  
 RNAV STAR



KLAS/LAS  
 McCARRAN INTL

JEPPESEN  
 8 FEB 08 (10-2F) Eff 14 Feb

LAS VEGAS, NEV  
 STAR



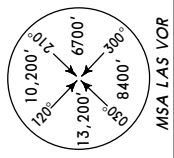
KLAS/LAS  
 McCARRAN INTL

JEPPESEN  
 8 FEB 08 (10-2G) Eff 14 Feb

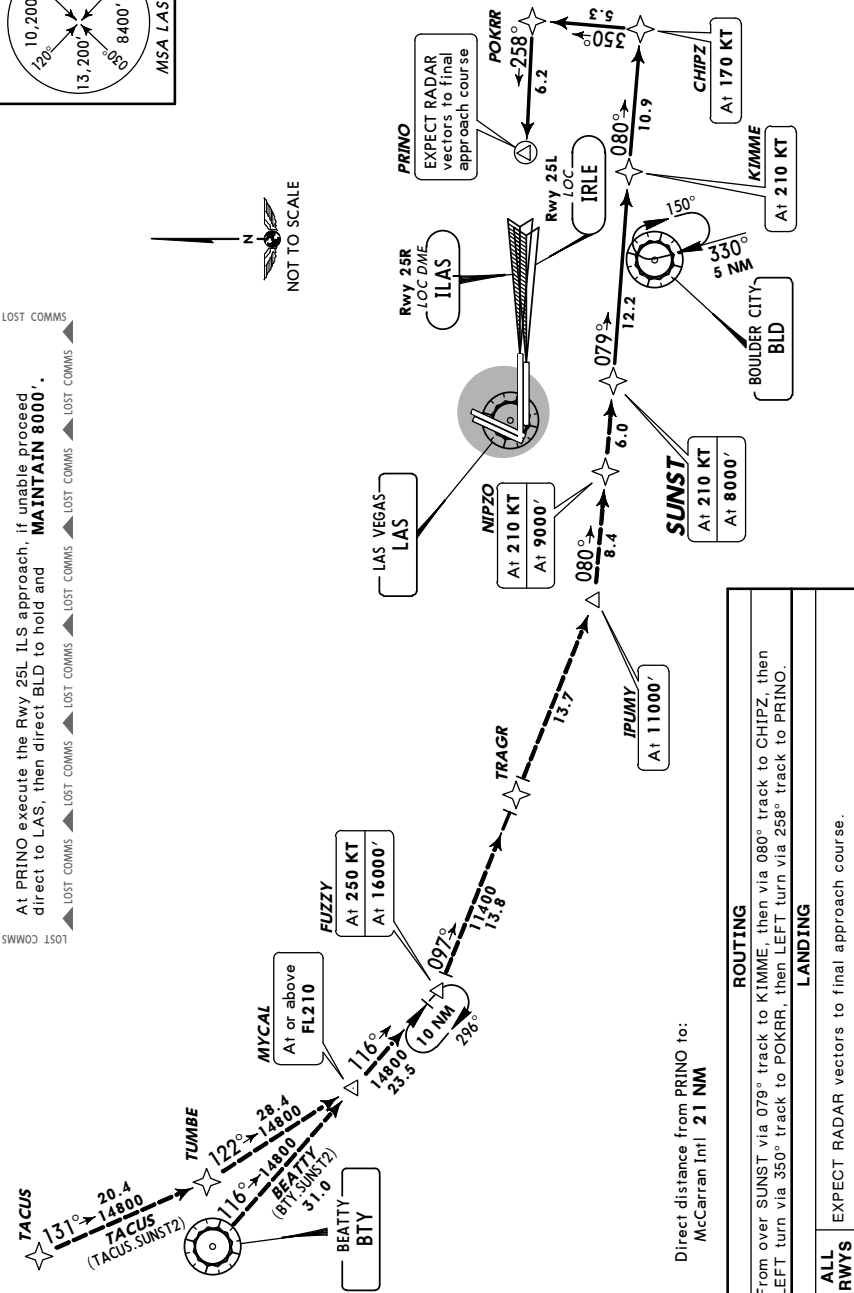
LAS VEGAS, NEV  
 RNAV STAR

D-ATIS Arrival  
**132.4**  
 Apt Elev  
**2181'**

Alt Set: INCHES Trans level: FL180 Trans alt: 18000'  
 1. RADAR required. 2. DME/DME/IRU or GPS required.  
 3. RNAV 1.



SUNST TWO RNAV ARRIVAL (SUNST.SUNST2)



Direct distance from PRINO to:  
 McCarran Intl 21 NM

**ROUTING**  
 From over SUNST via 079° track to KIMME, then via 080° track to CHIPZ, then LEFT turn via 350° track to POKRR, then LEFT turn via 258° track to PRINO.

**LANDING**  
 EXPECT RADAR vectors to final approach course.

**ALL RWYS**

CHANGES: NIPZO crossing restriction.

© JEPPESEN, 2003, 2008. ALL RIGHTS RESERVED.

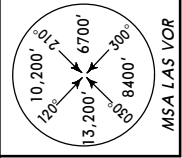
KLAS/LAS  
 McCARRAN INTL

JEPPESEN  
 8 FEB 08 (10-2H) Eff 14 Feb

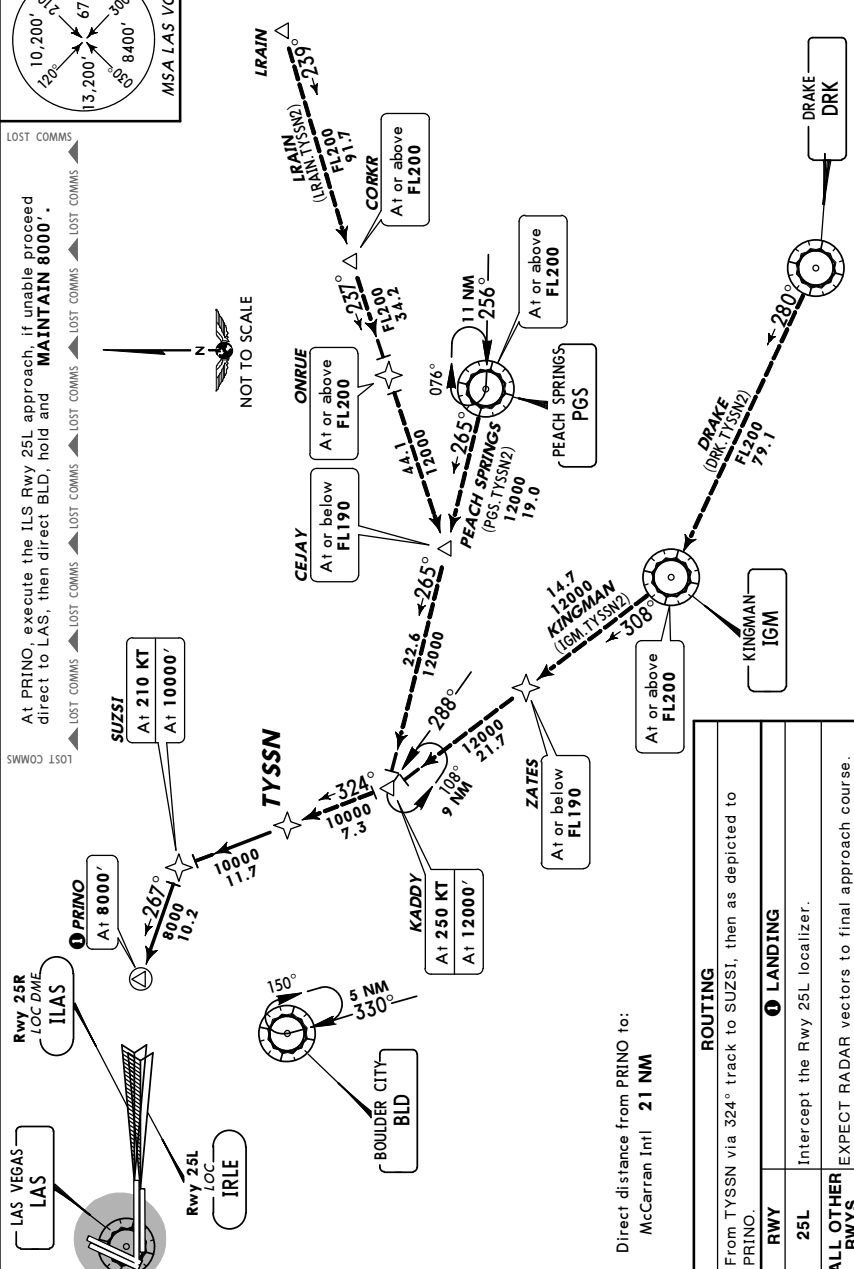
LAS VEGAS, NEV  
 RNAV STAR

D-ATIS Arrival  
**132.4**  
 Apt Elev  
**2181'**

Alt Set: INCHES Trans level: FL180 Trans alt: 18000'  
 1. RADAR required. 2. DME/DME/IRU or GPS required. 3. RNAV 1.  
 4. DRAKE, KINGMAN and PEACH SPRINGS transitions: For non-GPS equipped aircraft IGM and PGS DME's must be operational.  
 5. LRAIN transition: For non-GPS equipped aircraft DRK, IGM and PGS DME's must be operational.



TYSSN TWO RNAV ARRIVAL (TYSSN.TYSSN2)



Direct distance from PRINO to:  
 McCarran Intl 21 NM

**ROUTING**  
 From TYSSN via 324° track to SUZSI, then as depicted to PRINO.

**LANDING**  
 Intercept the Rwy 25L localizer.

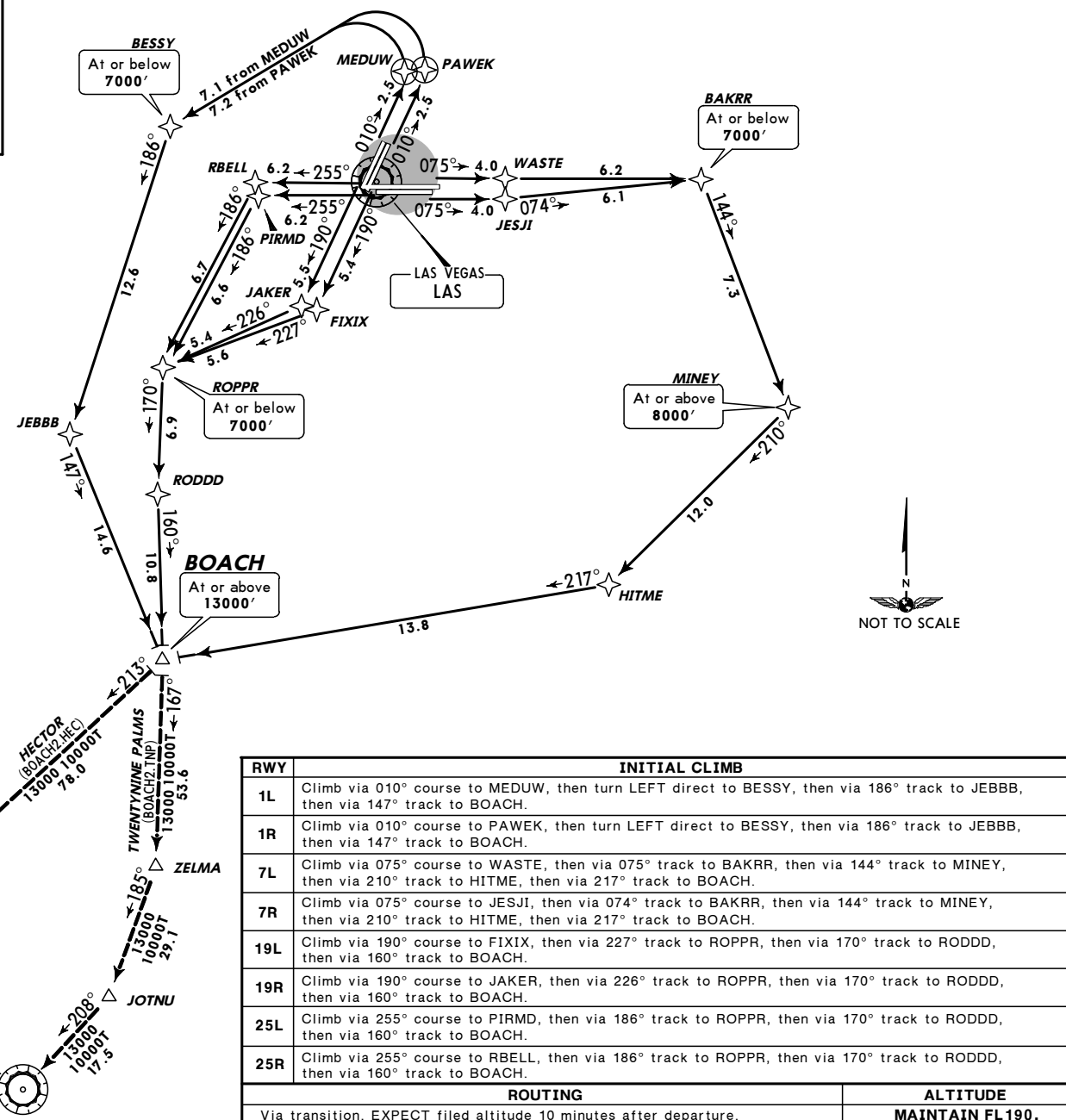
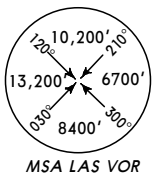
**ALL OTHER RWYS**  
 EXPECT RADAR vectors to final approach course.

CHANGES: Procedure revised, renumbered.

© JEPPESEN, 2003, 2008. ALL RIGHTS RESERVED.

**KLAS/LAS**  
 McCARRAN INTL

LAS VEGAS Departure (R) <b>125.9</b>	Apt Elev <b>2181'</b>	Trans level: FL180    Trans alt: 18000'	1. DME/DME/IRU or GPS required. 2. RNAV 1. 3. LAS and BLD must be operational. 4. RADAR required.
---	--------------------------	---	--



**BOACH TWO RNAV DEPARTURE  
 (BOACH2.BOACH)**

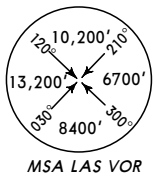
This SID requires take-off minimums (for standard minimums, refer to airport chart):  
 Rwy 1L: 1100-3 with minimum climb gradient of 490' per NM to **7000'**.  
 Rwy 1R: 1100-3 with minimum climb gradient of 500' per NM to **7000'**.  
 Rws 7L/R: Standard (or lower than standard, if authorized) with minimum climb gradient of 400' per NM to **8000'**.  
 Rws 19L/R, 25L: Standard (or lower than standard, if authorized) with minimum climb gradient of 400' per NM to **13000'**.  
 Rwy 25R: Standard (or lower than standard, if authorized) with minimum obstacle climb gradient of 220' per NM to **2400'** and ATC climb gradient of 400' per NM to **13000'**.

Gnd speed-KT	75	100	150	200	250	300
220' per NM	275	367	550	733	917	1100
400' per NM	500	667	1000	1333	1667	2000
490' per NM	613	817	1225	1633	2042	2450
500' per NM	625	833	1250	1667	2083	2500

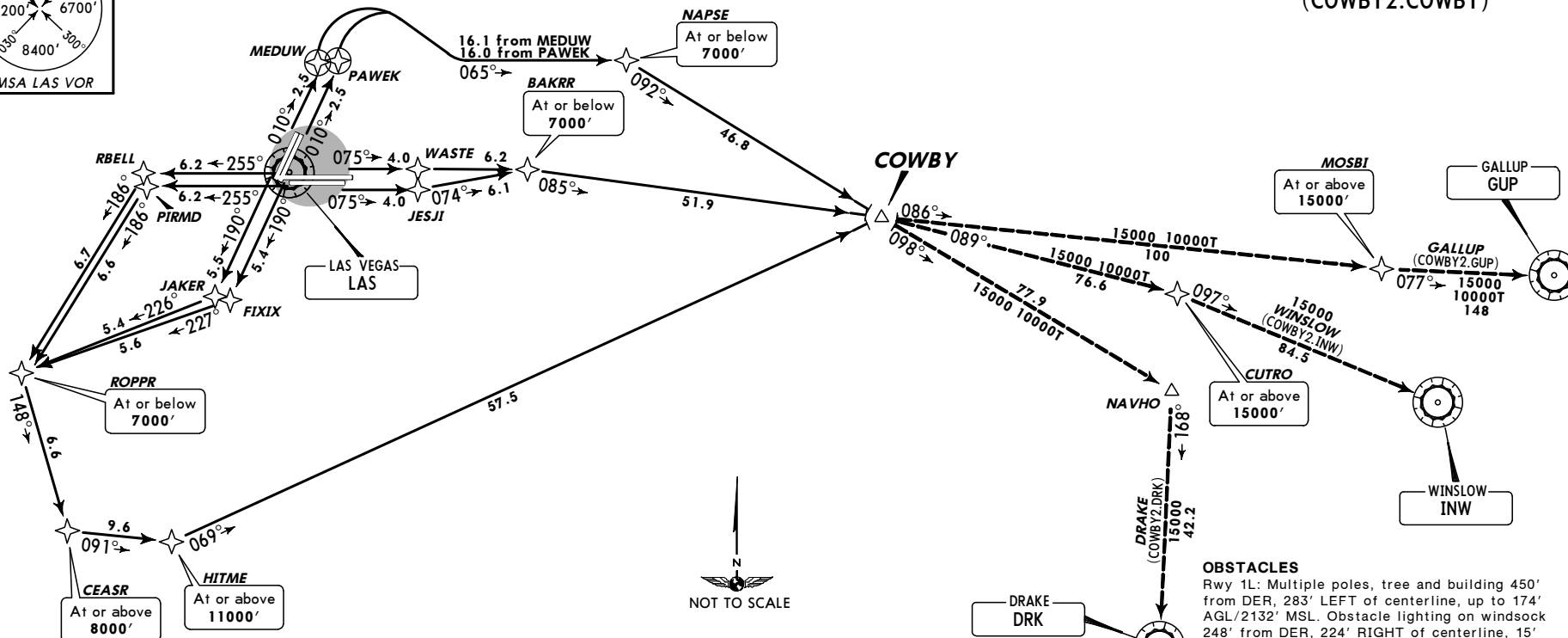
**OBSTACLES**  
 Rwy 1L: Multiple poles, tree and building 450' from DER, 283' LEFT of centerline, up to 174' AGL/2132' MSL. Obstacle lighting on windsock 248' from DER, 224' RIGHT of centerline, 15' AGL/2104' MSL.  
 Rwy 1R: Multiple sign and building 1331' from DER, 448' RIGHT of centerline, up to 100' AGL/2120' MSL.  
 Rwy 7L: Multiple pole and trees 747' from DER, 442' RIGHT of centerline up to 62' AGL/2062' MSL. Tree 1257' from DER, 789' LEFT of centerline, 65' AGL/2077' MSL.  
 Rwy 7R: LTD windsock 126' from DER, 290' RIGHT of centerline, 25' AGL/2051' MSL.  
 Rwy 19L: Multiple poles, sign and building 1394' from DER, 320' RIGHT of centerline, up to 51' AGL/2256' MSL.  
 Rwy 19R: Multiple poles, sign and building 197' from DER, 125' RIGHT of centerline, up to 51' AGL/2256' MSL. Multiple pole and building 1396' from DER, 356' LEFT of centerline, up to 47' AGL/2262' MSL.  
 Rwy 25L: Multiple poles, sign and building 1003' from DER, 251' LEFT of centerline, up to 63' AGL/2256' MSL.  
 Rwy 25R: Multiple poles and road 675' from DER, 17' RIGHT of centerline, up to 100' AGL/2301' MSL. Multiple poles and buildings 533' from DER, 1' LEFT of centerline, up to 150' AGL/2469' MSL.

RWY	INITIAL CLIMB	ROUTING	ALTITUDE
1L	Climb via 010° course to MEDUW, then turn LEFT direct to BESSY, then via 186° track to JEBBB, then via 147° track to BOACH.		
1R	Climb via 010° course to PAWEK, then turn LEFT direct to BESSY, then via 186° track to JEBBB, then via 147° track to BOACH.		
7L	Climb via 075° course to WASTE, then via 075° track to BAKRR, then via 144° track to MINEY, then via 210° track to HITME, then via 217° track to BOACH.		
7R	Climb via 075° course to JESJI, then via 074° track to BAKRR, then via 144° track to MINEY, then via 210° track to HITME, then via 217° track to BOACH.		
19L	Climb via 190° course to FIXIX, then via 227° track to ROPPR, then via 170° track to RODDD, then via 160° track to BOACH.		
19R	Climb via 190° course to JAKER, then via 226° track to ROPPR, then via 170° track to RODDD, then via 160° track to BOACH.		
25L	Climb via 255° course to PIRMD, then via 186° track to ROPPR, then via 170° track to RODDD, then via 160° track to BOACH.		
25R	Climb via 255° course to RBELL, then via 186° track to ROPPR, then via 170° track to RODDD, then via 160° track to BOACH.		
		Via transition. EXPECT filed altitude 10 minutes after departure.	<b>MAINTAIN FL 190.</b>

LAS VEGAS Departure (R)		Apt Elev 2181'	Trans level: FL180    Trans alt: 18000'	1. DME/DME/IRU or GPS required. 2. RNAV 1. 3. LAS and BLD must be operational. 4. RADAR required.
Rwys 1L/R, 7L/R <b>133.95</b>	Rwys 19L/R, 25L/R <b>125.9</b>			



**COWBY TWO RNAV DEPARTURE  
(COWBY2.COWBY)**



**OBSTACLES**

Rwy 1L: Multiple poles, tree and building 450' from DER, 283' LEFT of centerline, up to 174' AGL/2132' MSL. Obstacle lighting on windsock 248' from DER, 224' RIGHT of centerline, 15' AGL/2104' MSL.

Rwy 1R: Multiple sign and building 1331' from DER, 448' RIGHT of centerline, up to 100' AGL/2120' MSL.

Rwy 7L: Multiple pole and trees 747' from DER, 442' RIGHT of centerline up to 62' AGL/2062' MSL. Tree 1257' from DER, 789' LEFT of centerline, 65' AGL/2077' MSL.

Rwy 7R: LTD windsock 126' from DER, 290' RIGHT of centerline, 25' AGL/2051' MSL.

Rwy 19L: Multiple poles, sign and building 1394' from DER, 320' RIGHT of centerline, up to 51' AGL/2256' MSL.

Rwy 19R: Multiple poles, sign and building 197' from DER, 125' RIGHT of centerline, up to 51' AGL/2256' MSL. Multiple pole and building 1396' from DER, 356' LEFT of centerline, up to 47' AGL/2262' MSL.

Rwy 25L: Multiple poles, sign and building 1003' from DER, 251' LEFT of centerline, up to 63' AGL/2256' MSL.

Rwy 25R: Multiple poles and road 675' from DER, 17' RIGHT of centerline, up to 100' AGL/2301' MSL. Multiple poles and buildings 533' from DER, 1' LEFT of centerline, up to 150' AGL/2469' MSL.

This SID requires take-off minimums (for standard minimums, refer to airport chart):

Rwys 1L/R: Standard (or lower than standard, if authorized) with minimum climb gradient of 258' per NM to **7000'**.

Rwys 7L/R: Standard (or lower than standard, if authorized).

Rwys 19L/R: Standard (or lower than standard, if authorized) with minimum climb gradient of 363' per NM to **11000'**.

Rwy 25L: Standard (or lower than standard, if authorized) with minimum obstacle climb gradient of 220' per NM to **2400'** and ATC climb gradient of 332' per NM to **11000'**.

Rwy 25R: Standard (or lower than standard, if authorized) with minimum obstacle climb gradient of 220' per NM to **2400'** and ATC climb gradient of 332' per NM to **11000'**.

Gnd speed-KT	75	100	150	200	250	300
220' per NM	275	367	550	733	917	1100
258' per NM	323	430	645	860	1075	1290
332' per NM	415	553	830	1107	1383	1660
363' per NM	454	605	908	1210	1513	1815

RWY	INITIAL CLIMB	ROUTING	ALTITUDE MAINTAIN FL190
1L	Climb via 010° course to MEDUW, then via 065° track to NAPSE, then via 092° track to COWBY.		
1R	Climb via 010° course to PAWEK, then via 065° track to NAPSE, then via 092° track to COWBY.		
7L	Climb via 075° course to WASTE, then via 075° track to BAKRR, then via 085° track to COWBY.		
7R	Climb via 075° course to JESJI, then via 074° track to BAKRR, then via 085° track to COWBY.		
19L	Climb via 190° course to FIXIX, then via 227° track to ROPPR, then via 148° track to CEASR, then via 091° track to HITME, then via 069° track to COWBY.		
19R	Climb via 190° course to JAKER, then via 226° track to ROPPR, then via 148° track to CEASR, then via 091° track to HITME, then via 069° track to COWBY.		
25L	Climb via 255° course to PIRMD, then via 186° track to ROPPR, then via 148° track to CEASR, then via 091° track to HITME, then via 069° track to COWBY.		
25R	Climb via 255° course to RBELL, then via 186° track to ROPPR, then via 148° track to CEASR, then via 091° track to HITME, then via 069° track to COWBY.		
		Via transition. EXPECT filed altitude 10 minutes after departure.	

KLAS/LAS  
McCARRAN INTL

JEPPESEN  
12 JAN 07 (10-3B) Eff 18 Jan

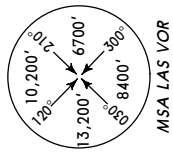
LAS VEGAS, NEV  
SID

LAS VEGAS Departure (R)  
Rwys 1L/R, 7L/R  
**133.95**

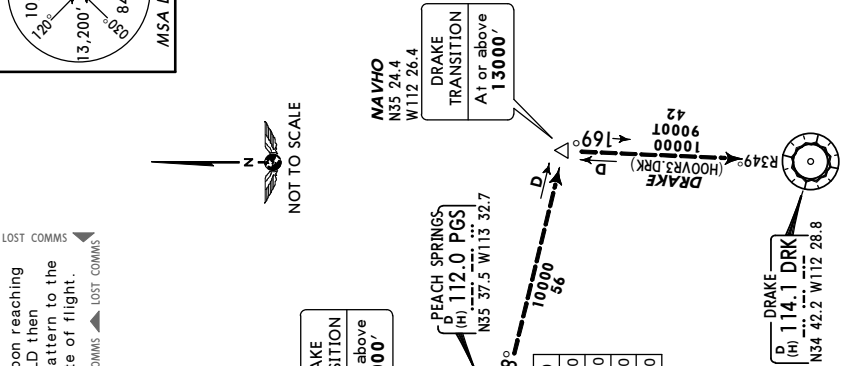
Rwys 19L/R, 25L/R  
**125.9**

Apt Elev  
**2181'**

Trans level: FL180 Trans alt: 18000'  
1. RADAR required.  
2. DME required.



### HOOVER THREE DEPARTURE (HOOVR3.LAS)



Obst	Alt	Dist	Grnd speed-KT	75	100	150	200	250	300
324'	per NM	405	540	810	1080	1350	1620		
328'	per NM	410	547	820	1093	1367	1640		
360'	per NM	450	600	900	1200	1500	1800		
400'	per NM	500	667	1000	1333	1667	2000		

**OBSTACLE**  
For TAKEOFF OBSTACLE  
NOTES see 10-3-OB1.

**INITIAL CLIMB**  
1L/R Climb via heading 010° to 2500', then climbing RIGHT turn heading 050'.  
7L/R Climb via heading 075°.  
19L/R Climb via heading 190° until LAS 3 DME, then turn RIGHT heading 220°.  
25L/R Climb via heading 255° until LAS 3 DME, then turn LEFT heading 190°.

**ROUTING**  
Via RADAR vectors to transition or assigned route. EXPECT clearance to filed altitude two minutes after departure.

**ALTITUDE**  
MAINTAIN 7000'

This SID requires take-off minimums (for standard minimums, refer to airport chart):  
Rwys 1L/R: Standard (or lower than standard, if authorized) with minimum obstacle climb of 328' per NM to 5000', ATC climb of 400' per NM to 5200'.  
Rwys 7L/R: Standard (or lower than standard, if authorized).  
Rwys 19L/R: Standard (or lower than standard, if authorized) with a minimum climb of 360' per NM to 7000'.  
Rwys 25L/R: Standard (or lower than standard, if authorized) with minimum obstacle climb of 324' per NM to 7100', ATC climb of 360' per NM to 7000'.

KLAS/LAS  
McCARRAN INTL

JEPPESEN  
12 JAN 07 (10-3C) Eff 18 Jan

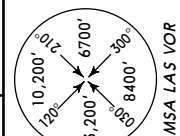
LAS VEGAS, NEV  
SID

LAS VEGAS Departure (R)  
Rwys 1L/R, 7L/R  
**133.95**

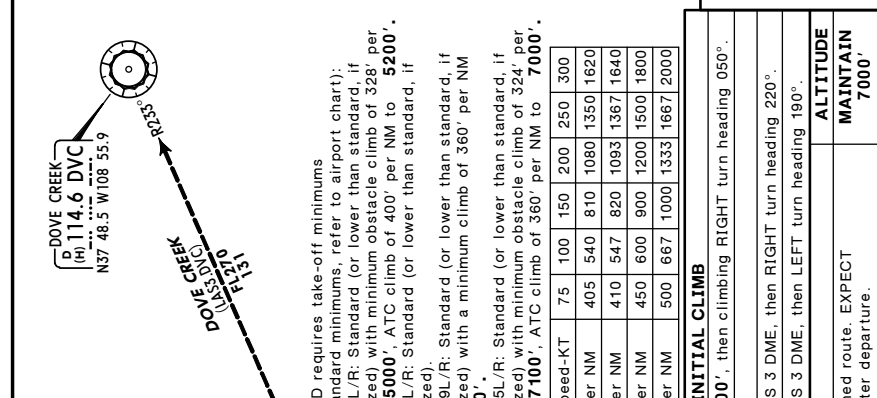
Rwys 19L/R, 25L/R  
**125.9**

Apt Elev  
**2181'**

Trans level: FL180 Trans alt: 18000'  
1. RADAR required.  
2. DME required.



### LAS VEGAS THREE DEPARTURE (LAS3.LAS)



Obst	Alt	Dist	Grnd speed-KT	75	100	150	200	250	300
324'	per NM	405	540	810	1080	1350	1620		
328'	per NM	410	547	820	1093	1367	1640		
360'	per NM	450	600	900	1200	1500	1800		
400'	per NM	500	667	1000	1333	1667	2000		

**OBSTACLE**  
For TAKEOFF OBSTACLE  
NOTES see 10-3-OB1.

**INITIAL CLIMB**  
1L/R Climb via heading 010° to 2500', then climbing RIGHT turn heading 050'.  
7L/R Climb via heading 075°.  
19L/R Climb via heading 190° until LAS 3 DME, then RIGHT turn heading 220°.  
25L/R Climb via heading 255° until LAS 3 DME, then LEFT turn heading 190°.

**ROUTING**  
Via RADAR vectors to transition or assigned route. EXPECT clearance to filed altitude two minutes after departure.

**ALTITUDE**  
MAINTAIN 7000'

This SID requires take-off minimums (for standard minimums, refer to airport chart):  
Rwys 1L/R: Standard (or lower than standard, if authorized) with minimum obstacle climb of 328' per NM to 5000', ATC climb of 400' per NM to 5200'.  
Rwys 7L/R: Standard (or lower than standard, if authorized).  
Rwys 19L/R: Standard (or lower than standard, if authorized) with a minimum climb of 360' per NM to 7000'.  
Rwys 25L/R: Standard (or lower than standard, if authorized) with minimum obstacle climb of 324' per NM to 7100', ATC climb of 360' per NM to 7000'.

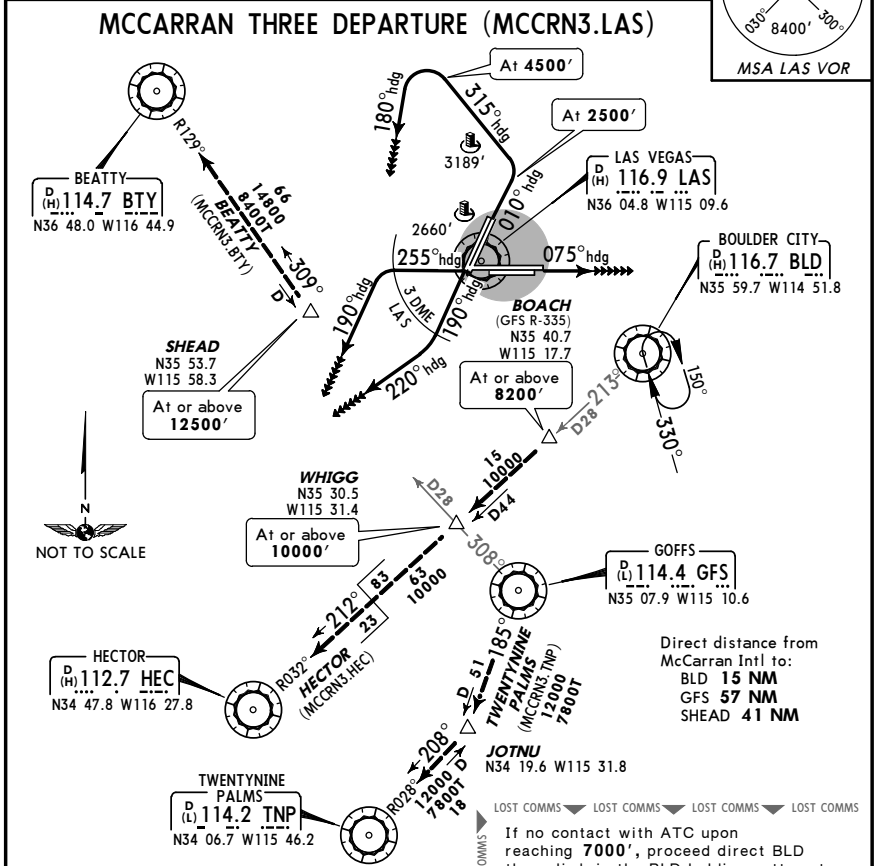


KLAS/LAS  
 McCARRAN INTL

JEPPESEN  
 29 JUN 07 (10-3D) Eff 5 Jul

LAS VEGAS, NEV  
 SID

LAS VEGAS Departure (R) <b>125.9</b>	Apt Elev <b>2181'</b>	Trans level: FL180 Trans alt: 18000' 1. RADAR required. 2. DME required.	<p>MSA LAS VOR</p>
<p><b>MCCARRAN THREE DEPARTURE (MCCRN3.LAS)</b></p>			



This SID requires take-off minimums (for standard minimums, refer to airport chart):  
 Rwy 1L/R: 1100-3 with minimum climb of 529' per NM to 7000'.  
 Rwy 7L/R: Standard (or lower than standard, if authorized) with minimum climb of 440' per NM to 7000'.  
 Rwy 19L/R: Standard (or lower than standard, if authorized) with a minimum climb of 360' per NM to 7000'.  
 Rwy 25L/R: Standard (or lower than standard, if authorized) with a minimum obstacle climb of 324' per NM to 7100', ATC climb of 360' per NM to 7000'.

**OBSTACLE**  
 For TAKEOFF OBSTACLE  
 NOTES see 10-3-OB1.

Gnd speed-KT	75	100	150	200	250	300
324' per NM	405	540	810	1080	1350	1620
360' per NM	450	600	900	1200	1500	1800
440' per NM	550	733	1100	1467	1833	2200
529' per NM	661	882	1323	1763	2204	2645

RWY	INITIAL CLIMB
1L/R	Climb via heading 010° to 2500', then climbing LEFT turn heading 315° to 4500', then climbing LEFT turn heading 180°.
7L/R	Climb via heading 075°.
19L/R	Climb via heading 190° until LAS 3 DME, then RIGHT turn heading 220°.
25L/R	Climb via heading 255° until LAS 3 DME, then LEFT turn heading 190°.

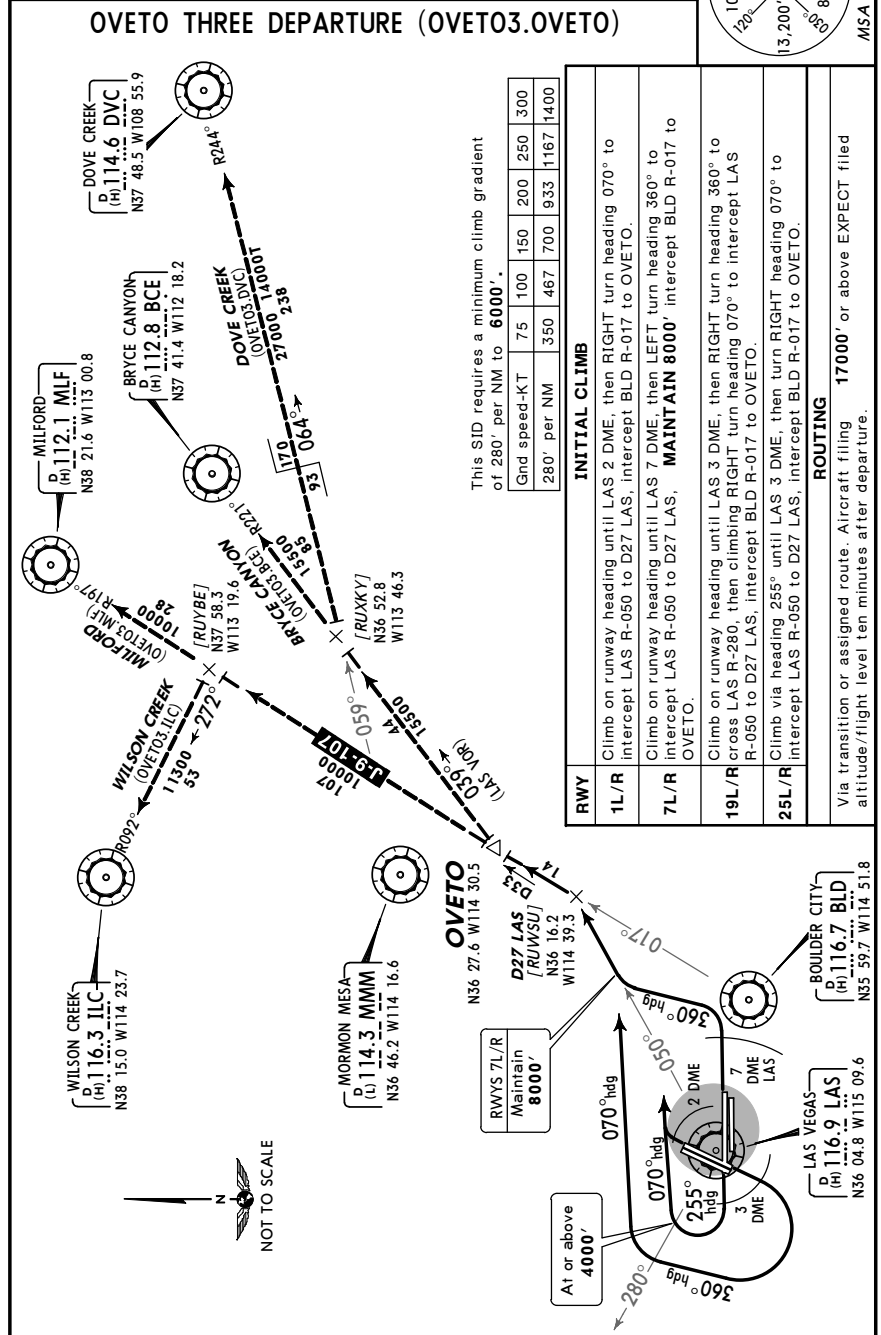
ROUTING	ALTITUDE
Via RADAR vectors to transition or assigned route. EXPECT clearance to filed altitude two minutes after departure.	<b>MAINTAIN 7000'</b>

KLAS/LAS  
 McCARRAN INTL

JEPPESEN  
 29 JUN 07 (10-3E) Eff 5 Jul

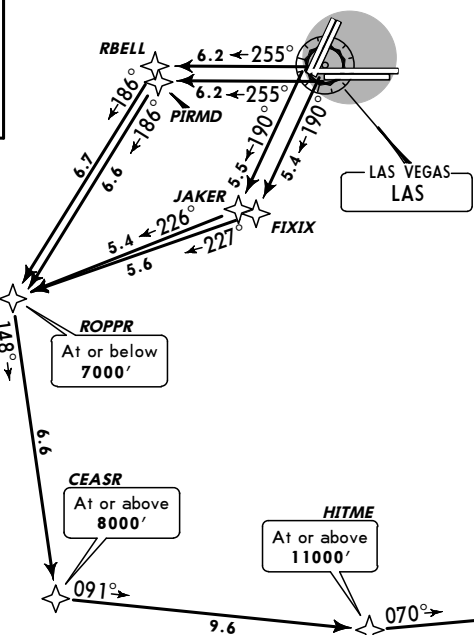
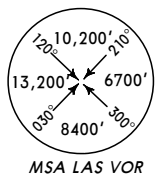
LAS VEGAS, NEV  
 SID

LAS VEGAS Departure (R) <b>133.95</b>	Apt Elev <b>2181'</b>	Trans level: FL180 Trans alt: 18000' DME required.	<p>MSA LAS VOR</p>
<p><b>OVETO THREE DEPARTURE (OVETO3.OVETO)</b></p>			



**KLAS/LAS**  
**McCARRAN INTL**

LAS VEGAS Departure (R) <b>125.9</b>	Apt Elev <b>2181'</b>	Trans level: FL180    Trans alt: 18000'	1. DME/DME/IRU or GPS required. 2. RNAV 1. 3. LAS and BLD must be operational. 4. RADAR required.
---	--------------------------	---	--



**PRFUM TWO RNAV DEPARTURE**  
**(PRFUM2.PRNUM)**



This SID requires take-off minimums (for standard minimums, refer to airport chart):  
 Rwy 1L/R, 7L/R: Not authorized- Air traffic.  
 Rwy 19L/R: Standard (or lower than standard, if authorized) with minimum climb gradient of 335' per NM to **15500'**.  
 Rwy 25L: Standard (or lower than standard, if authorized) with minimum climb gradient of 307' per NM to **16500'**.  
 Rwy 25R: Standard (or lower than standard, if authorized) with minimum obstacle climb gradient of 220' per NM to **2400'** and ATC climb gradient of 307' per NM to **16500'**.

Gnd speed-KT	75	100	150	200	250	300
220' per NM	275	367	550	733	917	1100
307' per NM	384	512	768	1023	1279	1535
335' per NM	419	558	838	1117	1396	1675

**OBSTACLES**  
 Rwy 19L: Multiple poles, sign and building 1394' from DER, 320' RIGHT of centerline, up to 51' AGL/2256' MSL.  
 Rwy 19R: Multiple poles, sign and building 197' from DER, 125' RIGHT of centerline, up to 51' AGL/2256' MSL. Multiple pole and building 1396' from DER, 356' LEFT of centerline, up to 47' AGL/2262' MSL.  
 Rwy 25L: Multiple poles, sign and building 1003' from DER, 251' LEFT of centerline, up to 63' AGL/2256' MSL.  
 Rwy 25R: Multiple poles and road 675' from DER, 17' RIGHT of centerline, up to 100' AGL/2301' MSL. Multiple poles and buildings 533' from DER, 1' LEFT of centerline, up to 150' AGL/2469' MSL.

RWY	INITIAL CLIMB
19L	Climb via 190° course to FIXIX, then via 227° track to ROPPR, then via 148° track to CEASR.
19R	Climb via 190° course to JAKER, then via 226° track to ROPPR, then via 148° track to CEASR.
25L	Climb via 255° course to PIRMD, then via 186° track to ROPPR, then via 148° track to CEASR.
25R	Climb via 255° course to RBELL, then via 186° track to ROPPR, then via 148° track to CEASR.

ROUTING	ALTITUDE
Continue via 091° track to HITME, then via 070° track to WINDS, then via 108° track to KADDY, then via 108° track to PRFUM, then via transition. EXPECT filed altitude 10 minutes after departure.	<b>MAINTAIN FL 190</b>

LAS VEGAS Departure (R)  
**125.9**

Apt Elev  
**2181'**

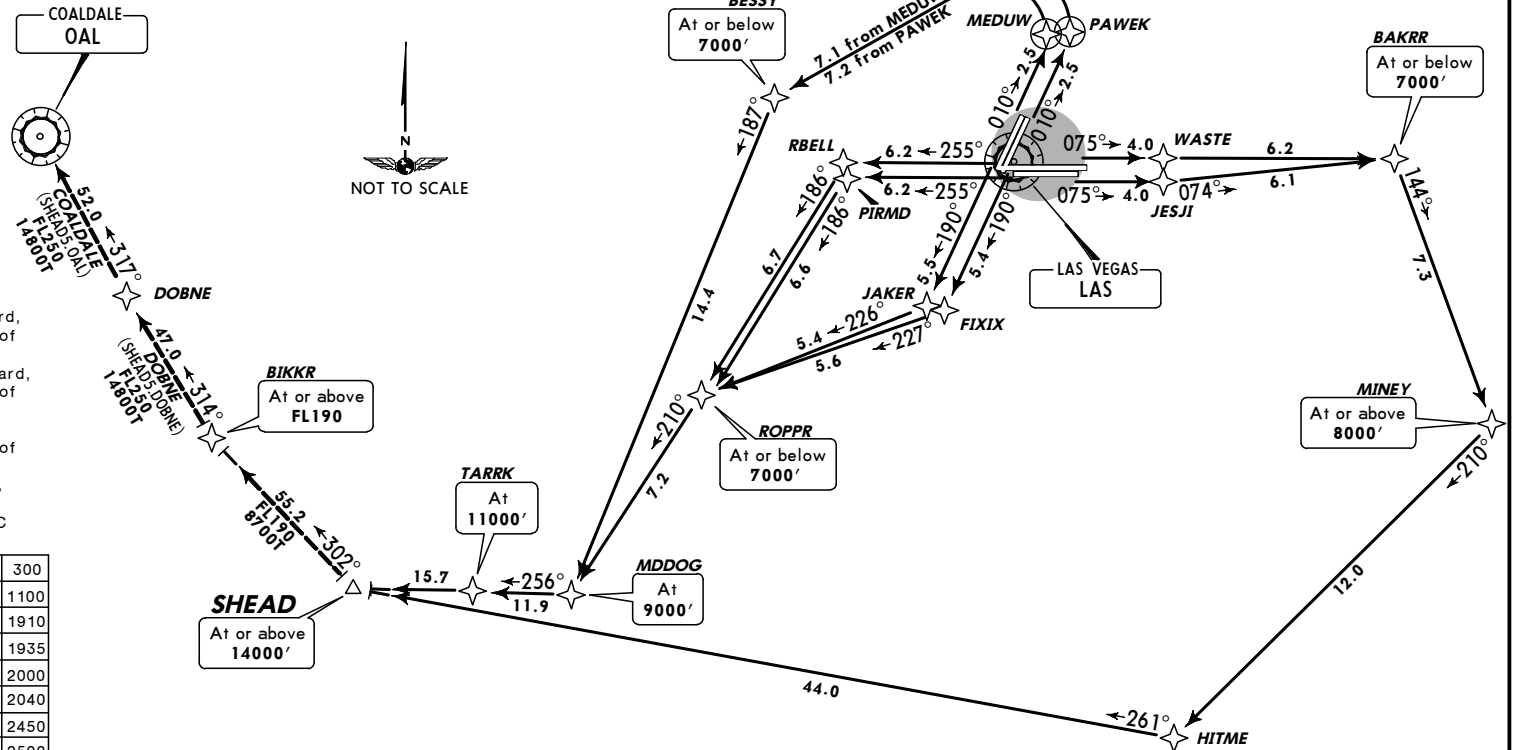
Trans level: FL180 Trans alt: 18000'

1. DME/DME/IRU or GPS required.
2. RNAV 1.
3. LSV and BLD must be operational.
4. BTY and TPH must be operational for COALDALE and DOBNE Transitions.
5. RADAR required.



This SID requires take-off minimums (for standard minimums, refer to airport chart):  
 Rwy 1L: 1100-3 with minimum climb gradient of 490' per NM to **7000'**.  
 Rwy 1R: 1100-3 with minimum climb gradient of 500' per NM to **7000'**.  
 Rws 7L/R: Standard (or lower than standard, if authorized) with minimum climb gradient of 400' per NM to **8000'**.  
 Rws 19L/R: Standard (or lower than standard, if authorized) with minimum climb gradient of 408' per NM to **9000'**.  
 Rwy 25L: Standard (or lower than standard, if authorized) with minimum climb gradient of 382' per NM to **9000'**.  
 Rwy 25R: Standard (or lower than standard, if authorized) with minimum obstacle climb gradient of 220' per NM to **2400'** and ATC climb gradient of 387' per NM to **9000'**.

Gnd speed-KT	75	100	150	200	250	300
220' per NM	275	367	550	733	917	1100
382' per NM	478	637	955	1273	1592	1910
387' per NM	484	645	968	1290	1613	1935
400' per NM	500	667	1000	1333	1667	2000
408' per NM	510	680	1020	1360	1700	2040
490' per NM	613	817	1225	1633	2042	2450
500' per NM	625	833	1250	1667	2083	2500



RWY	INITIAL CLIMB
1L	Climb via 010° course to MEDUW, then turn LEFT direct to BESSY, then via 187° track to MDDOG, then via 256° track to TARRK, then via 256° track to SHEAD.
1R	Climb via 010° course to PAWEK, then turn LEFT direct to BESSY, then via 187° track to MDDOG, then via 256° track to TARRK, then via 256° track to SHEAD.
7L	Climb via 075° course to WASTE, then via 075° track to BAKRR, then via 144° track to MINEY, then via 210° track to HITME, then via 261° track to SHEAD.
7R	Climb via 075° course to JESJI, then via 074° track to BAKRR, then via 144° track to MINEY, then via 210° track to HITME, then via 261° track to SHEAD.
19L	Climb via 190° course to FIXIX, then via 227° track to ROPPR, then via 210° track to MDDOG, then via 256° track to TARRK, then via 256° track to SHEAD.
19R	Climb via 190° course to JAKER, then via 226° track to ROPPR, then via 210° track to MDDOG, then via 256° track to TARRK, then via 256° track to SHEAD.
25L	Climb via 255° course to PIRMD, then via 186° track to ROPPR, then via 210° track to MDDOG, then via 256° track to TARRK, then via 256° track to SHEAD.
25R	Climb via 255° course to RBELL, then via 186° track to ROPPR, then via 210° track to MDDOG, then via 256° track to TARRK, then via 256° track to SHEAD.
<b>ROUTING</b>	
Via transition. EXPECT filed altitude 10 minutes after departure.	
<b>ALTITUDE</b>	
<b>MAINTAIN FL190</b>	

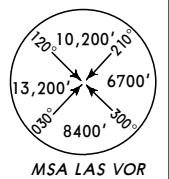
**OBSTACLES**

Rwy 1L: Multiple poles, tree and building 450' from DER, 283' LEFT of centerline, up to 174' AGL/2132' MSL. Obstacle lighting on windsock 248' from DER, 224' RIGHT of centerline, 15' AGL/2104' MSL.  
 Rwy 1R: Multiple sign and building 1331' from DER, 448' RIGHT of centerline, up to 100' AGL/2120' MSL.  
 Rwy 7L: Multiple pole and trees 747' from DER, 442' RIGHT of centerline up to 62' AGL/2062' MSL. Tree 1257' from DER, 789' LEFT of centerline, 65' AGL/2077' MSL.  
 Rwy 7R: LTD windsock 126' from DER, 290' RIGHT of centerline, 25' AGL/2051' MSL.  
 Rwy 19L: Multiple poles, sign and building 1394' from DER, 320' RIGHT of centerline, up to 51' AGL/2256' MSL.

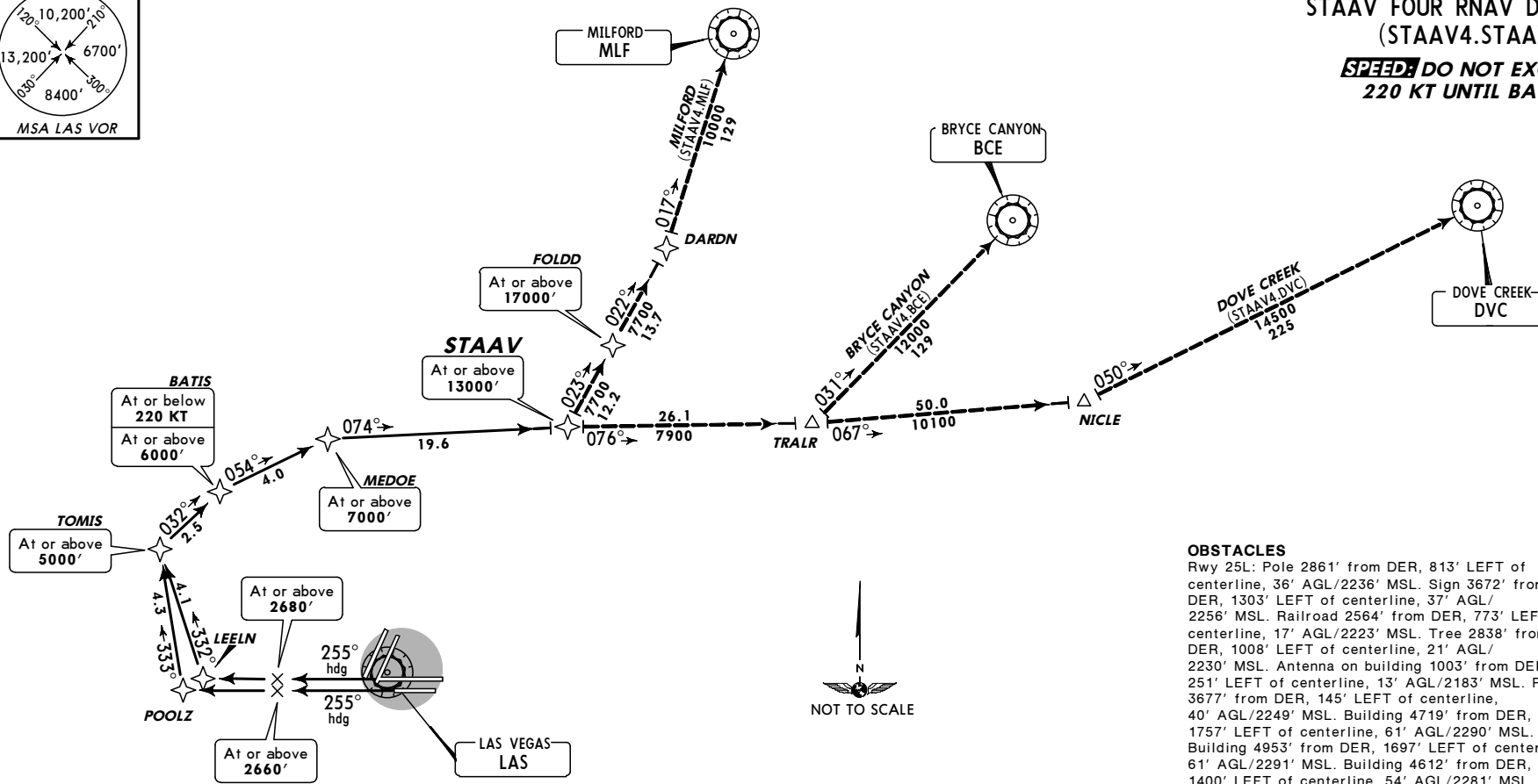
Rwy 19R: Multiple poles, sign and building 197' from DER, 125' RIGHT of centerline, up to 51' AGL/2256' MSL. Multiple pole and building 1396' from DER, 356' LEFT of centerline, up to 47' AGL/2262' MSL.  
 Rwy 25L: Multiple poles, sign and building 1003' from DER, 251' LEFT of centerline, up to 63' AGL/2256' MSL.  
 Rwy 25R: Multiple poles and road 675' from DER, 17' RIGHT of centerline, up to 100' AGL/2301' MSL. Multiple poles and buildings 533' from DER, 1' LEFT of centerline, up to 150' AGL/2469' MSL.

**KLAS/LAS**  
**McCARRAN INTL**

LAS VEGAS Departure (R) <b>133.95</b>	Apt Elev <b>2181'</b>	Trans level: FL180    Trans alt: 18000'	1. DME/DME/IRU or GPS required. 2. RNAV 1. 3. RADAR required. 4. For non-GPS equipped aircraft BLD and LAS DME's must be operational.
--	--------------------------	---	--



**STAAV FOUR RNAV DEPARTURE**  
**(STAAV4.STAAV)**  
**SPEED DO NOT EXCEED**  
**220 KT UNTIL BATIS**



**OBSTACLES**

Rwy 25L: Pole 2861' from DER, 813' LEFT of centerline, 36' AGL/2236' MSL. Sign 3672' from DER, 1303' LEFT of centerline, 37' AGL/2256' MSL. Railroad 2564' from DER, 773' LEFT of centerline, 17' AGL/2223' MSL. Tree 2838' from DER, 1008' LEFT of centerline, 21' AGL/2230' MSL. Antenna on building 1003' from DER, 251' LEFT of centerline, 13' AGL/2183' MSL. Pole 3677' from DER, 145' LEFT of centerline, 40' AGL/2249' MSL. Building 4719' from DER, 1757' LEFT of centerline, 61' AGL/2290' MSL. Building 4953' from DER, 1697' LEFT of centerline, 61' AGL/2291' MSL. Building 4612' from DER, 1400' LEFT of centerline, 54' AGL/2281' MSL. Rwy 25R: Light pole 3115' from DER, 1033' RIGHT of centerline, 92' AGL/2301' MSL. Multiple light poles beginning 1.6 NM from DER, 2836' LEFT of centerline, up to 130' AGL/2469' MSL. Obstacle light on sign 884' from DER, 710' LEFT of centerline, 34' AGL/2233' MSL. Multiple trees beginning 953' from DER, 522' RIGHT of centerline, up to 44' AGL/2237' MSL. Multiple trees beginning 954' from DER, 546' LEFT of centerline, up to 40' AGL/2245' MSL. Obstacle light DME 533' from DER, 445' LEFT of centerline, 18' AGL/2207' MSL. Building 1822' from DER, 652' LEFT of centerline, 59' AGL/2238' MSL. Road 669' from DER, 477' LEFT of centerline, 29' AGL/2208' MSL. Rod on building 534' from DER, 369' LEFT of centerline, 13' AGL/2202' MSL. Road 678' from DER, 17' RIGHT of centerline, 15' AGL/2201' MSL. Obstacle light on LOC 534' from DER, 1' from centerline, 6' AGL/2195' MSL.

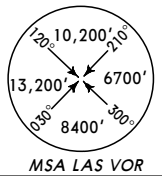
This SID requires take-off minimums (for standard minimums, refer to airport chart):  
 Rws 1L/R, 7L/R, 19L/R: Not authorized by ATC.  
 Rwy 25L: Standard (or lower than standard, if authorized) with ATC climb of 330' per NM to **13000'**.  
 Rwy 25R: 300-2 or standard (or lower than standard, if authorized) with minimum climb of 313' per NM to **4500'**, ATC climb of 330' per NM to **13000'**.

Gnd speed-KT	75	100	150	200	250	300
313' per NM	391	522	783	1043	1304	1565
330' per NM	413	550	825	1100	1375	1650

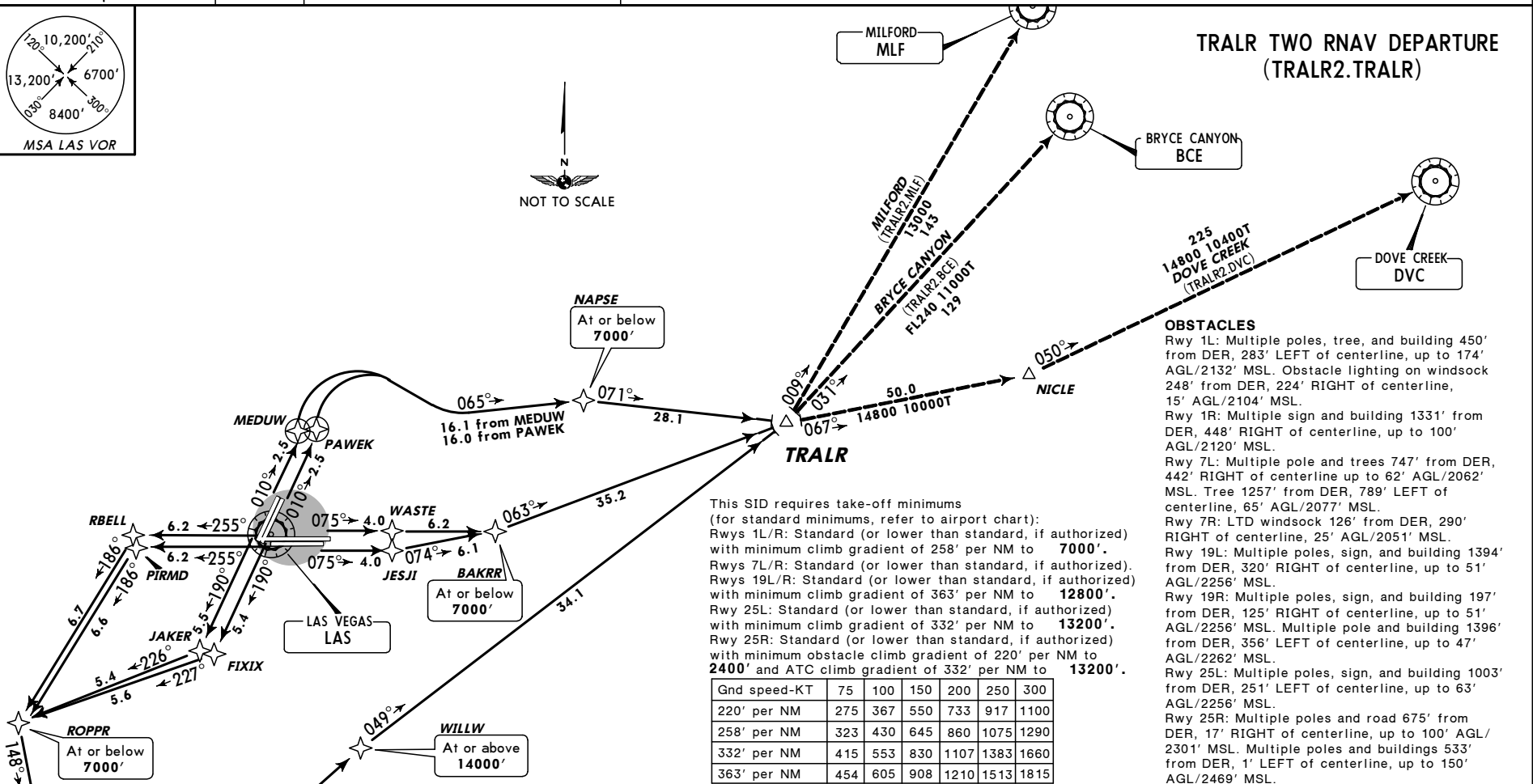
Direct distance from McCarran Intl  
 (Rwy 25L) to: POOLZ **6 NM**  
 (Rwy 25R) to: LEELN **6 NM**

RWY	INITIAL CLIMB	ALTITUDE
25L	Climb heading 255° to at or above <b>2660'</b> then direct POOLZ, then via 333° track to TOMIS.	<b>MAINTAIN FL190</b>
25R	Climb heading 255° to at or above <b>2680'</b> then direct LEELN, then via 332° track to TOMIS.	
ROUTING		
Then via 032° track to BATIS, then via 054° track to MEDOE, then via 074° track to STAAV. Then via transition. EXPECT filed altitude 10 minutes after departure.		

LAS VEGAS Departure (R)		Apt Elev 2181'	Trans level: FL180	Trans alt: 18000'	1. DME/DME/IRU or GPS required. 2. RNAV 1. 3. BLD and LAS must be operational. 4. RADAR required.
Rwys 1L/R, 7L/R <b>133.95</b>	Rwys 19L/R, 25L/R <b>125.9</b>				



**TRALR TWO RNAV DEPARTURE  
 (TRALR2.TRALR)**



**OBSTACLES**  
 Rwy 1L: Multiple poles, tree, and building 450' from DER, 283' LEFT of centerline, up to 174' AGL/2132' MSL. Obstacle lighting on windsock 248' from DER, 224' RIGHT of centerline, 15' AGL/2104' MSL.  
 Rwy 1R: Multiple sign and building 1331' from DER, 448' RIGHT of centerline, up to 100' AGL/2120' MSL.  
 Rwy 7L: Multiple pole and trees 747' from DER, 442' RIGHT of centerline up to 62' AGL/2062' MSL. Tree 1257' from DER, 789' LEFT of centerline, 65' AGL/2077' MSL.  
 Rwy 7R: LTD windsock 126' from DER, 290' RIGHT of centerline, 25' AGL/2051' MSL.  
 Rwy 19L: Multiple poles, sign, and building 1394' from DER, 320' RIGHT of centerline, up to 51' AGL/2256' MSL.  
 Rwy 19R: Multiple poles, sign, and building 197' from DER, 125' RIGHT of centerline, up to 51' AGL/2256' MSL. Multiple pole and building 1396' from DER, 356' LEFT of centerline, up to 47' AGL/2262' MSL.  
 Rwy 25L: Multiple poles, sign, and building 1003' from DER, 251' LEFT of centerline, up to 63' AGL/2256' MSL.  
 Rwy 25R: Multiple poles and road 675' from DER, 17' RIGHT of centerline, up to 100' AGL/2301' MSL. Multiple poles and buildings 533' from DER, 1' LEFT of centerline, up to 150' AGL/2469' MSL.

This SID requires take-off minimums (for standard minimums, refer to airport chart):  
 Rwys 1L/R: Standard (or lower than standard, if authorized) with minimum climb gradient of 258' per NM to **7000'**.  
 Rwys 7L/R: Standard (or lower than standard, if authorized) with minimum climb gradient of 363' per NM to **12800'**.  
 Rwys 19L/R: Standard (or lower than standard, if authorized) with minimum climb gradient of 332' per NM to **13200'**.  
 Rwy 25R: Standard (or lower than standard, if authorized) with minimum obstacle climb gradient of 220' per NM to **2400'** and ATC climb gradient of 332' per NM to **13200'**.

Gnd speed-KT	75	100	150	200	250	300
220' per NM	275	367	550	733	917	1100
258' per NM	323	430	645	860	1075	1290
332' per NM	415	553	830	1107	1383	1660
363' per NM	454	605	908	1210	1513	1815

RWY	INITIAL CLIMB	ALTITUDE
1L	Climb via 010° course to MEDUW, then via 065° track to NAPSE, then via 071° track to TRALR.	MAINTAIN FL190
1R	Climb via 010° course to PAWEK, then via 065° track to NAPSE, then via 071° track to TRALR.	
7L	Climb via 075° course to WASTE, then via 075° track to BAKRR, then via 063° track to TRALR.	
7R	Climb via 075° course to JESJI, then via 074° track to BAKRR, then via 063° track to TRALR.	
19L	Climb via 190° course to FIXIX, then via 227° track to ROPPR, then via 148° track to CEASR, then via 076° track to FORGE, then via 046° track to WILLW, then via 049° track to TRALR.	
19R	Climb via 190° course to JAKER, then via 226° track to ROPPR, then via 148° track to CEASR, then via 076° track to FORGE, then via 046° track to WILLW, then via 049° track to TRALR.	
25L	Climb via 255° course to PIRMD, then via 186° track to ROPPR, then via 148° track to CEASR, then via 076° track to FORGE, then via 046° track to WILLW, then via 049° track to TRALR.	
25R	Climb via 255° course to RBELL, then via 186° track to ROPPR, then via 148° track to CEASR, then via 076° track to FORGE, then via 046° track to WILLW, then via 049° track to TRALR.	

**ROUTING**  
 Then via transition. EXPECT filed altitude 10 minutes after departure.

KLAS/LAS

JEPPESEN

LAS VEGAS, NEV

9 FEB 07

10-30B1

McCARRAN INTL

## TAKEOFF OBSTACLE NOTES

- RWY 1L/R:  
3189' MSL MONUMENT, 2.7 NM NORTH OF DER, 2660' MSL BUILDING, 1.0 NM NORTH-WEST OF DER.
- RWY 1L:  
MULTIPLE BUILDINGS 3954' FROM DER, 1.0 NM LEFT OF CENTERLINE, UP TO 283' AGL/2409' MSL. POLE 450' FROM DER, 283' LEFT OF CENTERLINE, 38' AGL/2118' MSL, OBSTACLE LIGHT ON WIND SOCK 248' FROM DER, 224' RIGHT OF CENTERLINE, 50' AGL/2104' MSL, POLE 1029' FROM DER, 715' LEFT OF CENTERLINE, 85' AGL/2124' MSL, TREE 1536' FROM DER, 502' LEFT OF CENTERLINE, 100' AGL/2132' MSL.
- RWY 1R:  
SIGN 1331' FROM DER, 448' RIGHT OF CENTERLINE, 60' AGL/2120' MSL, BLDG 599' FROM DER, 541' RIGHT OF CENTERLINE, 70' AGL/2096' MSL, MULTIPLE BUILDINGS 4878' FROM DER, 1.2 NM LEFT OF CENTERLINE, 283' AGL/2409' MSL.
- RWY 7L:  
TREE 1257' FROM DER, 789' LEFT OF CENTERLINE, 85' AGL/2077' MSL, LIGHT POLE 747' FROM DER, 441' RIGHT OF CENTERLINE, 62' AGL/2057' MSL, TREE 1007' FROM DER, 557' RIGHT OF CENTERLINE, 70' AGL/2062' MSL.
- RWY 7R:  
LIGHT ON WIND SOCK 102' FROM DER, 300' RIGHT OF CENTERLINE, 30' AGL/2051' MSL.
- RWY 19L:  
POLE 1394' FROM DER, 533' RIGHT OF CENTERLINE, 36' AGL/2236' MSL, SIGN 2181' FROM DER, 1062' RIGHT OF CENTERLINE, 50' AGL/2256' MSL, ROD ON BLDG 2921' FROM DER, 581' RIGHT OF CENTERLINE, 50' AGL/2262' MSL, POLE 2633' FROM DER, 319' RIGHT OF CENTERLINE, 40' AGL/2246' MSL.
- RWY 19R:  
POLE 1135' FROM DER, 619' RIGHT OF CENTERLINE, 65' AGL/2249' MSL, POLE 756' FROM DER, 618' RIGHT OF CENTERLINE, 50' AGL/2231' MSL, SIGN 2182' FROM DER, 125' RIGHT OF CENTERLINE, 50' AGL/2256' MSL, POLE 1396' FROM DER, 403' LEFT OF CENTERLINE, 55' AGL/2236' MSL, ROD ON BLDG 197' FROM DER, 441' RIGHT OF CENTERLINE, 30' AGL/2202' MSL, ROD ON BLDG 2922' FROM DER, 356' LEFT CENTERLINE, 50' AGL/2262' MSL.
- RWY 25L:  
POLE 2860' FROM DER, 813' LEFT OF CENTERLINE, 57' AGL/2236' MSL, SIGN 3672' FROM DER, 1302' LEFT OF CENTERLINE, 57' AGL/2256' MSL, ANT ON BLDG 1002' FROM DER, 251' LEFT OF CENTERLINE, 34' AGL/2183' MSL, POLE 3677' FROM DER, 145' LEFT OF CENTERLINE, 67' AGL/2249' MSL.
- RWY 25R:  
LIGHT POLE 3115' FROM DER, 1033' RIGHT OF CENTERLINE, 109' AGL/2301' MSL, LIGHT ON POLE 1.5 NM FROM DER, 2836 LEFT OF CENTERLINE, 124' AGL/2457' MSL, ROAD 1.7 NM FROM DER, 2965 LEFT OF CENTERLINE, 139' AGL/2469' MSL, LIGHT ON POLE 1100' FROM DER, 508' LEFT OF CENTERLINE, 47' AGL/2226' MSL, BLDG 1822' FROM DER, 652' LEFT OF CENTERLINE, 46' AGL/2238' MSL, BLDG 2202' FROM DER, 596' LEFT OF CENTERLINE, 44' AGL/2246' MSL, ROD ON BLDG 534' FROM DER, 369' LEFT OF CENTERLINE, 33' AGL/2202' MSL, ROAD 678' FROM DER, 16' RIGHT OF CENTERLINE, 35' AGL/2201' MSL, LIGHT ON LOCALIZER ANTENNA 533' FROM DER ON CENTERLINE, 32' AGL/2195' MSL.

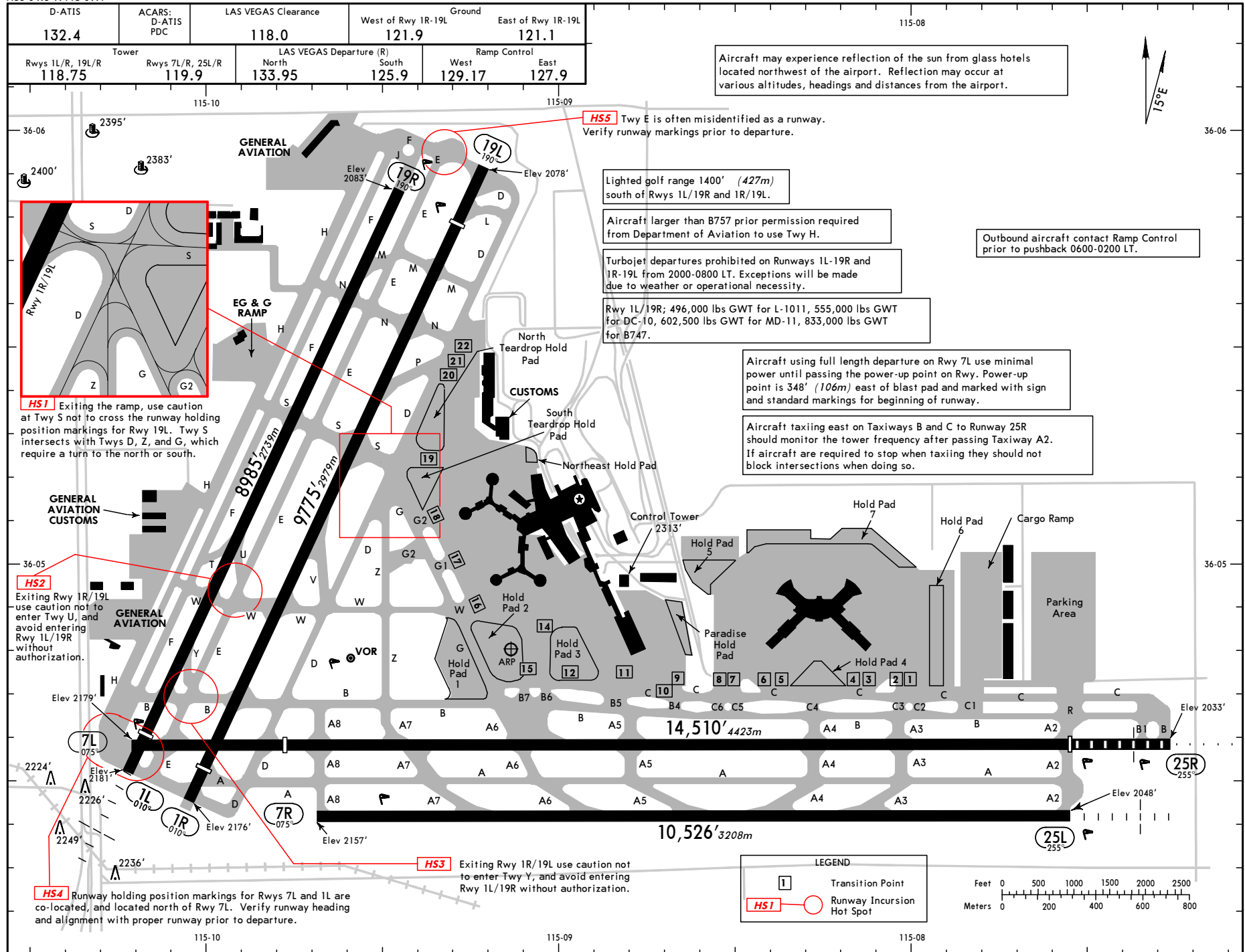
# KLAS/LAS

Apt Elev 2181'  
N36 04.8 W115 09.1

JEPPesen LAS VEGAS, NEV

4 SEP 09 10-9

McCARRAN INTL



KLAS/LAS



LAS VEGAS, NEV  
 McCARRAN INTL

**GENERAL**  
 Low-level wind shear alert system.  
 Birds and bats in vicinity of airport.  
 Extensive glider ops weekends and holidays; sunrise to sunset; LAS VOR R-187/020°; altitudes up to but not including FL180. Gliders remain clear of the Class B airspace but otherwise operate within the entire southwest quadrant of the Class B airspace veil.

RWY	SURFACE	USABLE LENGTHS	TAKE-OFF	WIDTH
1R 19L	MIRL REIL PAPI-L (angle 3.0°) grooved	1 8681' 2646m		150' 46m
		2 8745' 2665m		

1 Last 603' 184m of Rwy 1R is unavailable for landing distance computations.  
 2 Last 152' 46m of Rwy 19L is unavailable for landing distance computations.

1L 19R	HIRL REIL MALSF PAPI-L (angle 3.4°) grooved	8401' 2561m	7105' 2166m	150' 46m
	HIRL REIL PAPI-L (angle 3.0°) grooved	3 8397' 2559m		

3 Last 588' 179m of Rwy 19R is unavailable for landing distance computations.

7R 25L	HIRL REIL PAPI-L (angle 3.0°) porous friction course overlay	9401' 2865m	150' 46m
	HIRL MALSF PAPI-L (angle 3.0°)		

7L 25R	HIRL PAPI-L (angle 3.0°) porous friction course overlay	4 11,966' 3647m	150' 46m
	HIRL MALSR PAPI-L (angle 3.0°)	5 12,755' 3888m	

4 Last 405' 123m of Rwy 7L is unavailable for landing distance computations.  
 5 Last 358' 109m of Rwy 25R is unavailable for landing distance computations.

TAKE-OFF & OBSTACLE DEPARTURE PROCEDURE					
Adequate Vis Ref	STD	Rwys 1L/R, 7L/R, 19L/R, 25L		Rwy 25R	
		Adequate Vis Ref	STD	Other	
1 & 2 Eng	1/4	1	1/4	1	200-1
3 & 4 Eng	1/2	1/2	1/2		

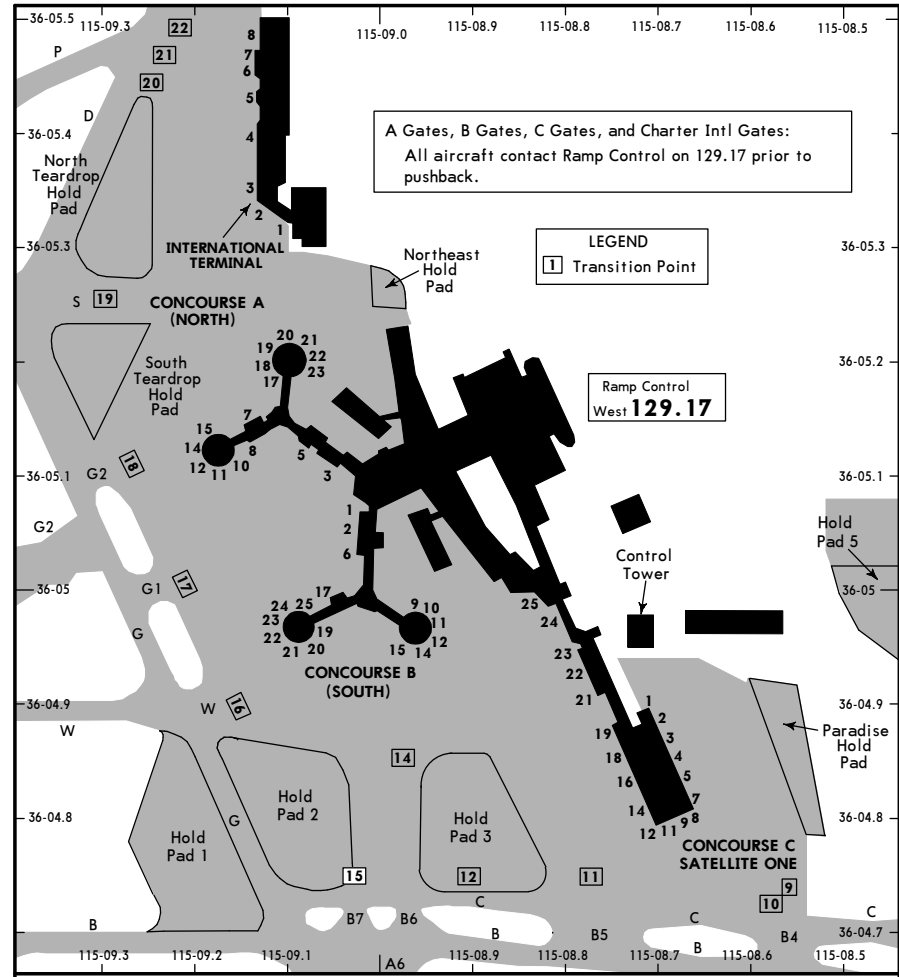
**OBSTACLE DP**  
 Runways 1L/R; Climbing right turn direct to BLD VOR. Runways 7L/R; Climb via heading 075° to 3400' then climbing right turn direct BLD VOR. Runways 19L/R; Climbing left turn via heading 120° and BLD VOR R-257 to BLD VOR. Runways 25L/R; Climb via heading 255° to 2700' then climbing right turn direct BLD VOR.

FOR FILING AS ALTERNATE			
	ILS Rwy 25L/R LOC Rwy 25L/R VOR Rwy 25L/R RNAV (GPS) Rwy 1R VOR DME-A	ILS Rwy 1L LOC DME Rwy 1L	Authorized Only When Local Weather Available RNAV (GPS) Rwy 19L/R
A	900-2	900-2	900-2
B	900-2 1/2	900-2 1/2	900-2 3/4
C	900-2 3/4	NA	900-3

KLAS/LAS



LAS VEGAS, NEV  
 McCARRAN INTL



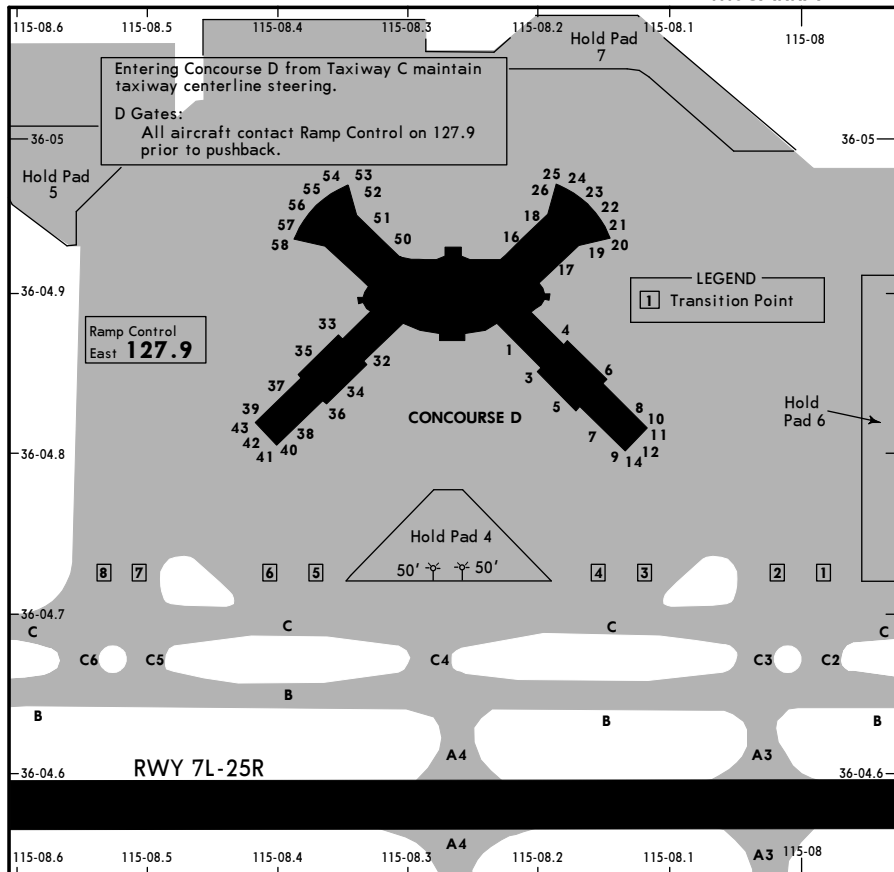
PARKING GATE COORDINATES			
GATE No.	COORDINATES	GATE No.	COORDINATES
<b>INTERNATIONAL TERMINAL</b>			
1, 2	N36 05.3 W115 09.1	1, 2	N36 05.1 W115 09.0
3 thru 5	N36 05.4 W115 09.1	6, 9	N36 05.0 W115 09.0
6 thru 8	N36 05.5 W115 09.1	10, 11, 12	N36 05.0 W115 08.9
<b>CONCOURSE A (NORTH)</b>			
3, 5	N36 05.1 W115 09.1	14, 15	N36 05.0 W115 09.0
7	N36 05.2 W115 09.1	17	N36 05.0 W115 09.1
8	N36 05.1 W115 09.1	19 thru 25	N36 05.0 W115 09.1
10, 11, 12	N36 05.1 W115 09.2	<b>CONCOURSE C-SATELLITE ONE</b>	
14, 15	N36 05.1 W115 09.2	1 thru 4	N36 04.9 W115 08.7
17 thru 23	N36 05.2 W115 09.1	5, 7, 8, 9, 11	N36 04.8 W115 08.7
<b>CONCOURSE B (SOUTH)</b>			
12, 14, 16	N36 04.8 W115 08.7	18	N36 04.9 W115 08.7
18	N36 04.9 W115 08.7	19	N36 04.9 W115 08.8
21 thru 23	N36 04.9 W115 08.8	21 thru 23	N36 04.9 W115 08.8
24, 25	N36 05.0 W115 08.8	24, 25	N36 05.0 W115 08.8



KLAS/LAS

JEPPESEN  
 4 SEP 09 (10-9C)

LAS VEGAS, NEV  
 McCARRAN INTL



**PARKING GATE COORDINATES**

GATE No.	COORDINATES
<b>CONCOURSE D</b>	
1, 3, 4	N36 04.9 W115 08.2
5	N36 04.8 W115 08.2
6	N36 04.9 W115 08.1
7	N36 04.8 W115 08.2
8 thru 12	N36 04.8 W115 08.1
14	N36 04.8 W115 08.1
16 thru 19	N36 04.9 W115 08.2
20, 21	N36 04.9 W115 08.1
22 thru 26	N36 05.0 W115 08.2
32	N36 04.9 W115 08.3
33	N36 04.9 W115 08.4
34	N36 04.8 W115 08.3
35	N36 04.9 W115 08.4
36	N36 04.8 W115 08.4
37 thru 43	N36 04.8 W115 08.4
50, 51	N36 04.9 W115 08.3
52, 53	N36 05.0 W115 08.3
54, 55, 56	N36 05.0 W115 08.4
57, 58	N36 04.9 W115 08.4

KLAS/LAS

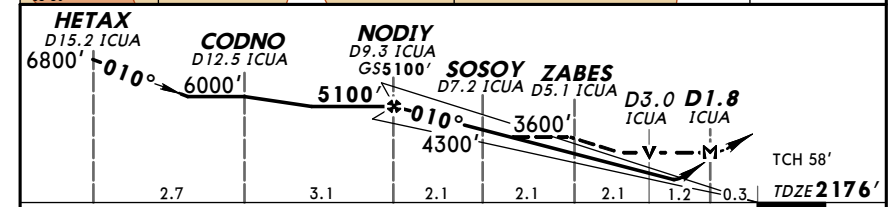
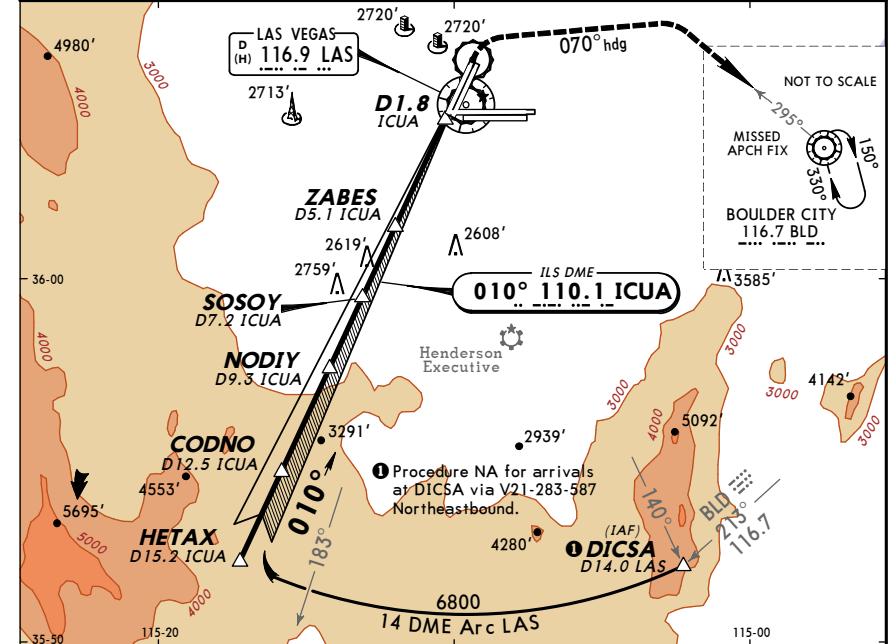
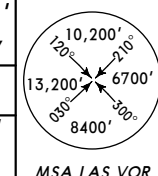
JEPPESEN CAT A, B & C  
 8 AUG 08 (11-1)

LAS VEGAS, NEV  
 McCARRAN INTL  
 ILS or LOC DME Rwy 1L

D-ATIS Arrival <b>132.4</b>	LAS VEGAS Approach (R) <b>125.02</b>	LAS VEGAS Tower Rwys 1 L/R, 19 L/R <b>118.75</b>	Rwys 7 L/R, 25 L/R <b>119.9</b>	Ground West of Rwy 1R/19L <b>121.9</b>	East of Rwy 1R/19L <b>121.1</b>
LOC ICUA <b>110.1</b>	Final Apch Crs <b>010°</b>	GS <b>NODIY</b> <b>5100' (2924')</b>	ILS DA(H) <b>2460' (284')</b>	Apt Elev <b>2181'</b>	TDZE <b>2176'</b>

**MISSED APCH:** Climb to 3200', then climbing RIGHT turn to 6000' via 070° heading and inbound BLD R-295 to BLD VOR and hold.

Alt Set: INCHES Trans level: FL 180 Trans alt: 18000'  
 1. DME required. 2. Use ICUA DME when on localizer course. 3. To remain within controlled airspace pilots should not exceed LAS 15.0 DME. 4. VGSI and ILS glidepath not coincident. 5. ILS unusable within 0.2 NM from threshold.

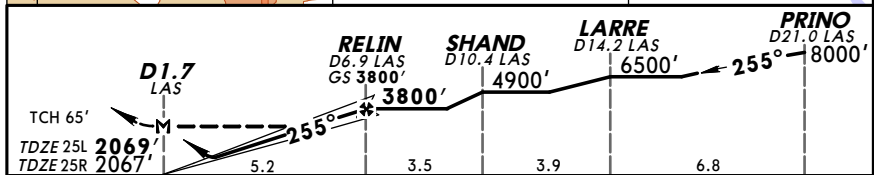


Gnd speed-Kts	70	90	100	120	140	160	MALSF REIL PAPI	3200'	6000'	070°	BLD
GS	3.40°	426	548	609	731	853		974	↑	via	and

	STRAIGHT-IN LANDING RWY1L		LOC (GS out)		CIRCLE-TO-LAND	
	ILS DA(H) FULL	ALS out	MDA(H) 1	ALS out	Max Kts	MDA(H)
A	2460' (284')		2720' (544')		90	3020' (839')-1
B	1		1		120	3020' (839')-1 1/4
C	1		1 1/2		140	3020' (839')-2 1/2
D	NA		NA		D	NA

**KLAS/LAS McCARRAN INTL** **JEPPesen** **LAS VEGAS, NEV**  
 8 AUG 08 (11-2) **ILS or LOC Rwy 25L**

D-ATIS Arrival	LAS VEGAS Approach (R)	LAS VEGAS Tower Rwys 7 L/R, 25 L/R	LAS VEGAS Tower Rwys 1 L/R, 19 L/R	Ground West of Rwy 1R/19L	Ground East of Rwy 1R/19L
132.4	125.02	119.9	118.75	121.9	121.1
LOC IRLE	Final Apch Crs	GS RELIN	ILS DA(H)	Apt Elev 2181'	
111.75	255°	3800' (1731')	2269' (200')	TDZE 25L 2069'	

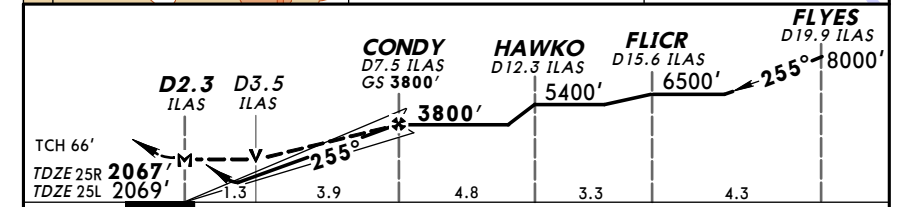
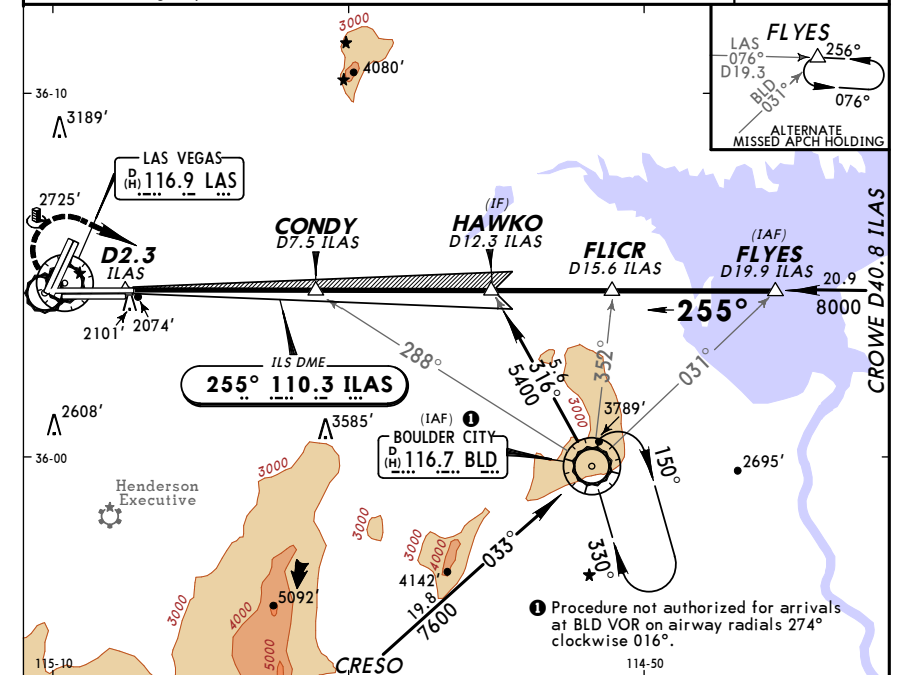


Gnd speed-Kts	70	90	100	120	140	160	MALSFS	3000'	6000'	D	BLD
GS	3.00°	377	484	538	646	753	PAPIS	↑	↑	→	116.7
MAP at D1.7 LAS or RELIN to MAP	5.2	4:27	3:28	3:07	2:36	2:14					

STRAIGHT-IN LANDING RWY25L			SIDESTEP LANDING RWY25R			CIRCLE-TO-LAND			
ILS		LOC (GS out)		MDA(H) 2540' (473')					
DA(H) 2269' (200')		MDA(H) 2540' (471')							
FULL	ALS out	ALS out		RAIL or ALS out		Max Kts	MDA(H)		
A						90	3020' (839') - 1		
B	3/4	1		1		120	3020' (839') - 1 1/4		
C	3/4	1 1/4		1 1/2		140	3020' (839') - 2 1/2		
D		1 1/2	1 1/2	2		165	3020' (839') - 2 3/4		

**KLAS/LAS McCARRAN INTL** **JEPPesen** **LAS VEGAS, NEV**  
 9 JAN 09 (11-3) **Eff 15 Jan** **ILS or LOC Rwy 25R**

D-ATIS Arrival	LAS VEGAS Approach (R)	LAS VEGAS Tower Rwys 7 L/R, 25 L/R	LAS VEGAS Tower Rwys 1 L/R, 19 L/R	Ground West of Rwy 1R/19L	Ground East of Rwy 1R/19L
132.4	125.02	119.9	118.75	121.9	121.1
LOC ILAS	Final Apch Crs	GS CONDY	ILS DA(H)	Apt Elev 2181'	
110.3	255°	3800' (1733')	2340' (273')	TDZE 25R 2067'	

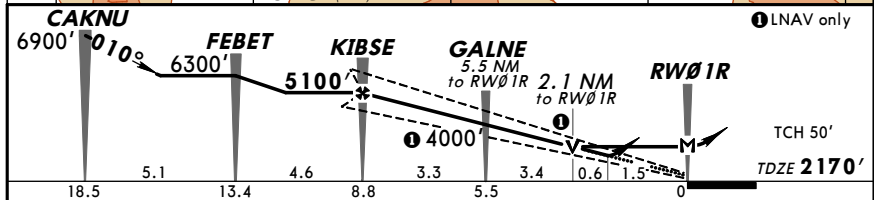
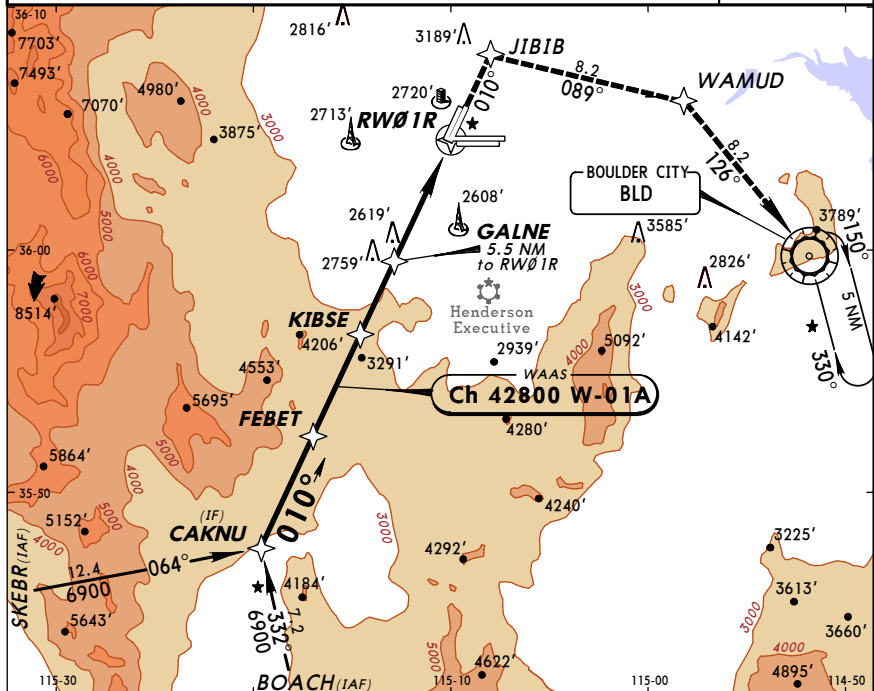


Gnd speed-Kts	70	90	100	120	140	160	MALSRS	3200'	6000'	D	BLD
GS	3.00°	377	484	538	646	753	PAPIS	↑	↑	→	116.7
MAP at D2.2 ILAS or CONDY to MAP	5.2	4:27	3:28	3:07	2:36	2:14					

STRAIGHT-IN LANDING RWY25R			SIDESTEP LANDING RWY25L			CIRCLE-TO-LAND			
ILS		LOC (GS out)		MDA(H) 2540' (473')					
DA(H) 2340' (273')		MDA(H) 2540' (471')							
FULL	RAIL or ALS out	RAIL out	ALS out	ALS out		Max Kts	MDA(H)		
A						90	3020' (839') - 1		
B		1/2	3/4	1		120	3020' (839') - 1 1/4		
C	1/2	3/4	1 1/4		1 1/2	140	3020' (839') - 2 1/2		
D		1	1 1/2		2	165	3040' (859') - 2 3/4		

**KLAS/LAS McCARRAN INTL** **JEPPESEN** **LAS VEGAS, NEV**  
 19 SEP 08 (12-1) **RNAV (GPS) Rwy 1R**

D-ATIS Arrival	LAS VEGAS Approach (R)	LAS VEGAS Tower Rwys 1L/R, 19L/R	LAS VEGAS Tower Rwys 7L/R, 25L/R	Ground West of Rwy 1R/19L	Ground East of Rwy 1R/19L
132.4	125.02	118.75	119.9	121.9	121.1
WAAS <b>Ch 42800</b> W-01A	Final Apch Crs <b>010°</b>	Minimum Alt <b>KIBSE</b> 5100' (2930')	LVP DA(H) <b>2693' (523')</b>	Apt Elev 2181'	
MISSED APCH: Climb to 6000' direct JIBIB and via 089° track to WAMUD and via 126° track to BLD VOR and hold.					13,200'
Alt Set: INCHES Trans level: FL 180 Trans alt: 18000'					MSA RWØ1R
1. DME/DME RNP-0.3 not authorized. 2. VGSI and RNAV glidepath not coincident.					

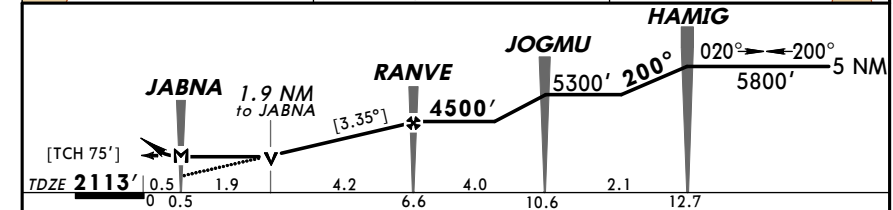
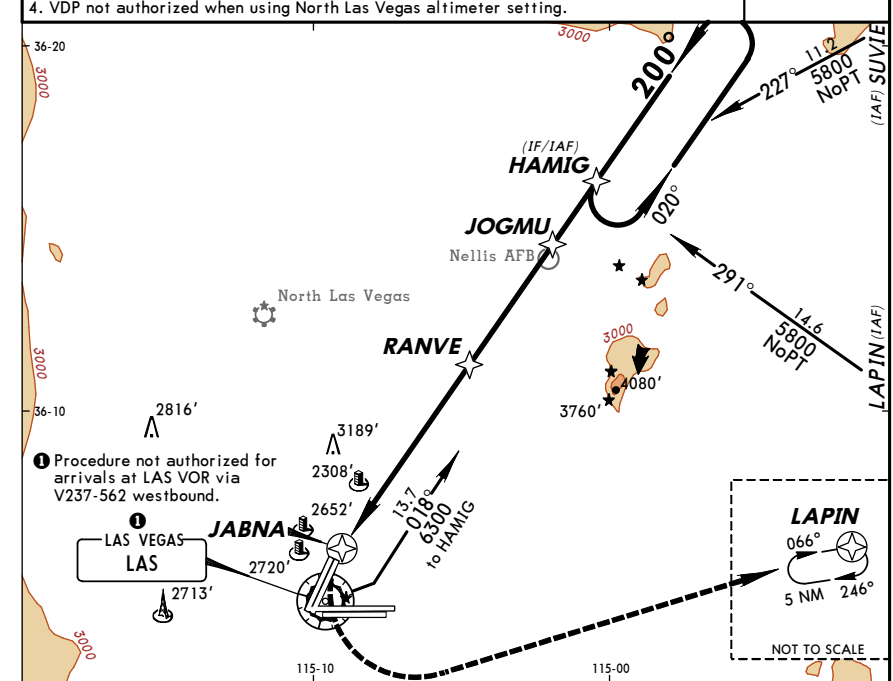


Gnd speed-Kts	70	90	100	120	140	160	REIL	6000'	→	JIBIB
Glide Path Angle	3.00°	372	478	531	637	743	PAPI-L			
MAP at RWØ1R										

	STRAIGHT-IN LANDING RWY 1R			CIRCLE-TO-LAND	
	LPV DA(H) 2693' (523')	LNAV MDA(H) 2920' (750')	Max Kts	MDA(H)	
A		1	90	3020' (839')-1¾	
B	1¾	1¼	120	3020' (839')-2½	
C		2¼	140	3020' (839')-2¾	
D		2½	165	3020' (839')-2¾	

**KLAS/LAS McCARRAN INTL** **JEPPESEN** **LAS VEGAS, NEV**  
 19 SEP 08 (12-2) **RNAV (GPS) Rwy 19L**

D-ATIS Arrival	LAS VEGAS Approach (R)	LAS VEGAS Tower Rwys 1L/R, 19L/R	LAS VEGAS Tower Rwys 7L/R, 25L/R	Ground West of Rwy 1R/19L	Ground East of Rwy 1R/19L
132.4	125.02	118.75	119.9	121.9	121.1
RNAV	Final Apch Crs <b>200°</b>	Minimum Alt <b>RANVE</b> 4500' (2387')	LNAV MDA(H) (CONDITIONAL) <b>2920' (807')</b>	Apt Elev 2181'	
MISSED APCH: Climbing LEFT turn to 6000' direct LAPIN and hold.					13,200'
Alt Set: INCHES Trans level: FL 180 Trans alt: 18000'					MSA JABNA
1. If local altimeter setting not received, use North Las Vegas altimeter setting. 2. DME/DME RNP-0.3 not authorized. 3. VGSI and descent angles not coincident. 4. VDP not authorized when using North Las Vegas altimeter setting.					



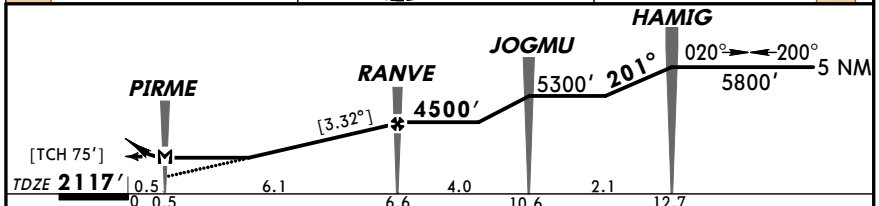
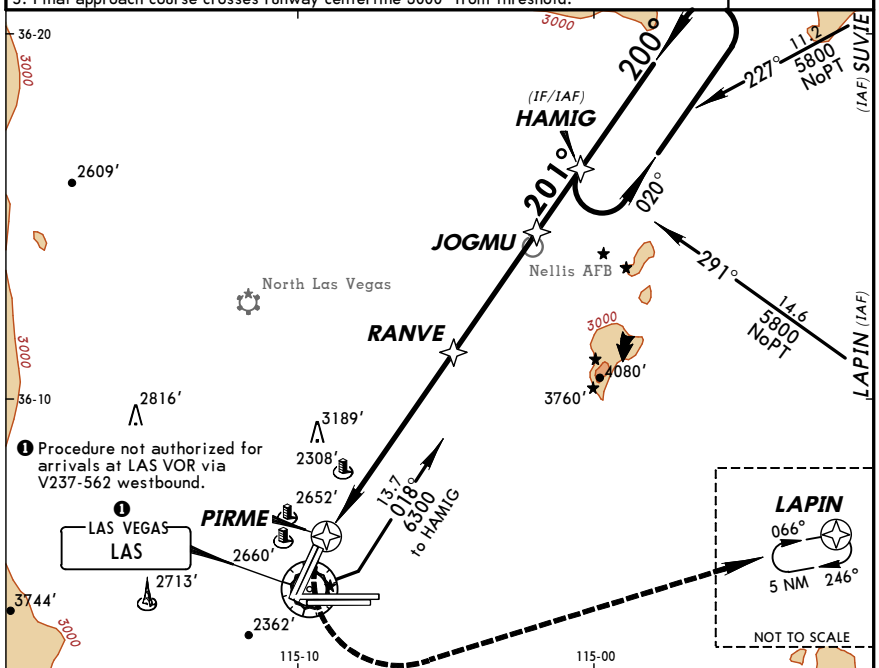
Gnd speed-Kts	70	90	100	120	140	160	REIL	6000'	←	LAPIN
Descent angle	3.35°	415	534	593	711	830	PAPI-L			
MAP at JABNA										

	STRAIGHT-IN LANDING RWY19L			CIRCLE-TO-LAND	
	With Local Altimeter Setting MDA(H) 2920' (807')	LNAV With North Las Vegas Altimeter Setting MDA(H) 2960' (847')	Max Kts	With Local Altimeter Setting MDA(H)	With North Las Vegas Altimeter Setting MDA(H)
A	1	1	90	3020' (839')-1	3060' (879')-1
B	1¼	1¼	120	3020' (839')-1¼	3060' (879')-1¼
C	2¼	2¼	140	3080' (899')-2¾	3120' (939')-2¾
D	2½	2½	165	3080' (899')-3	3120' (939')-3

**KLAS/LAS McCARRAN INTL** **JEPPesen** **LAS VEGAS, NEV**  
**17 NOV 06** **12-3** **RNAV (GPS) Rwy 19R**

D-ATIS Arrival	LAS VEGAS Approach (R)	LAS VEGAS Tower Rwys 1L/R, 19L/R	West of Rwy 1R/19L	Ground East of Rwy 1R/19L
132.4	125.02	118.75 119.9	121.9	121.1
RNAV	Final Apch Crs <b>201°</b>	Minimum Alt <b>RANVE</b> 4500' (2383')	LNAV MDA(H) (CONDITIONAL) <b>2980' (863')</b>	Apt Elev 2181' TDZE <b>2117'</b>

**MISSED APCH: Climbing LEFT turn to 6000' direct LAPIN and hold.**  
 Alt Set: INCHES Trans level: FL 180 Trans alt: 18000'  
 1. If local altimeter setting not received, use North Las Vegas altimeter setting.  
 2. DME/DME RNP-0.3 not authorized. 3. VGS1 and descent angles not coincident.  
 4. Visibility reduction by helicopters not authorized.  
 5. Final approach course crosses runway centerline 3000' from threshold.



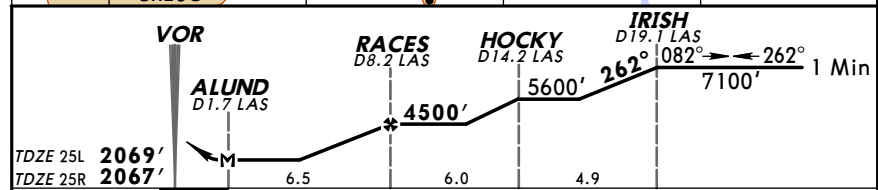
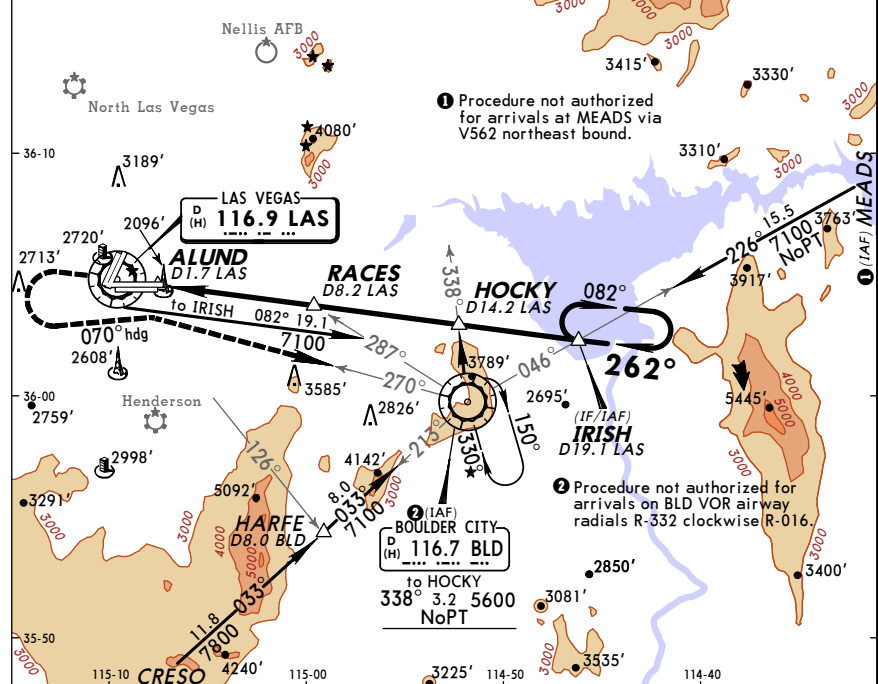
Gnd speed-Kts	70	90	100	120	140	160	REIL	6000'	MAP at PIRME
Descent angle	[3.32°]	411	529	587	705	822	940	LT	LAPIN

	STRAIGHT-IN LANDING RWY19R		CIRCLE-TO-LAND	
	LNAV	With North Las Vegas Altimeter Setting	With Local Altimeter Setting	With North Las Vegas Altimeter Setting
A	1	3020' (839')-1	3020' (839')-1	3060' (879')-1
B	1 1/4	3020' (839')-1 1/4	3020' (839')-1 1/4	3060' (879')-1 1/4
C	2 1/2	3080' (899')-2 3/4	3080' (899')-2 3/4	3120' (939')-2 3/4
D	2 3/4	3080' (899')-3	3080' (899')-3	3120' (939')-3

**KLAS/LAS McCARRAN INTL** **JEPPesen** **LAS VEGAS, NEV**  
**21 AUG 09** **13-1** **Eff 27 Aug** **VOR Rwy 25L/R**

D-ATIS Arrival	LAS VEGAS Approach (R)	LAS VEGAS Tower Rwys 7L/R, 25L/R	East of Rwy 1R/19L	Ground West of Rwy 1R/19L
132.4	125.02	119.9 118.75	121.1	121.9
VOR LAS <b>116.9</b>	Final Apch Crs <b>262°</b>	Minimum Alt <b>RACES</b> 4500' (2431')	MDA(H) Refer to Minimums	Apt Elev 2181' TDZE 25L <b>2069'</b> TDZE 25R <b>2067'</b>

**MISSED APCH: Climb to 4000' then climbing LEFT turn to 6000' via heading 070° and inbound via BLD VOR R-270 to BLD VOR and hold.**  
 Alt Set: INCHES Trans level: FL 180 Trans alt: 18000'  
 1. Procedure not authorized for arrivals at MEADS via V562 northeast bound.  
 2. Procedure not authorized for arrivals on BLD VOR airway radials R-332 clockwise R-016.



Gnd speed-Kts	70	90	100	120	140	160	Rwy 25L MALSFS	Rwy 25R MALSRS	4000'	6000'	1 Min
MAP at ALUND or RACES to MAP	5:34	4:20	3:54	3:15	2:47	2:26	PAPI	PAPI	LT	070°	hdg

	STRAIGHT-IN LANDING		CIRCLE-TO-LAND	
	RWY 25L	RWY 25R	RAIL out	ALS out
A	3/4	1	3020' (839')-1	3020' (839')-1
B	1 1/4	1 1/4	3020' (839')-1 1/4	3020' (839')-1 1/4
C	2 1/4	2 1/4	3020' (839')-2 1/4	3020' (839')-2 1/4
D	2	2	3040' (859')-2 3/4	3040' (859')-2 3/4

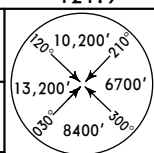
**KLAS/LAS**  
**McCARRAN INTL**

**JEPPESEN**  
21 AUG 09 **(13-2)** Eff 27 Aug

**LAS VEGAS, NEV**  
**VOR DME-A**

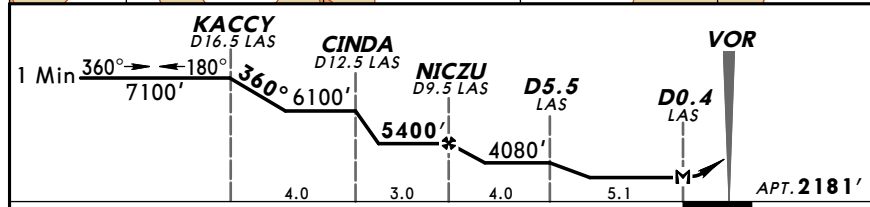
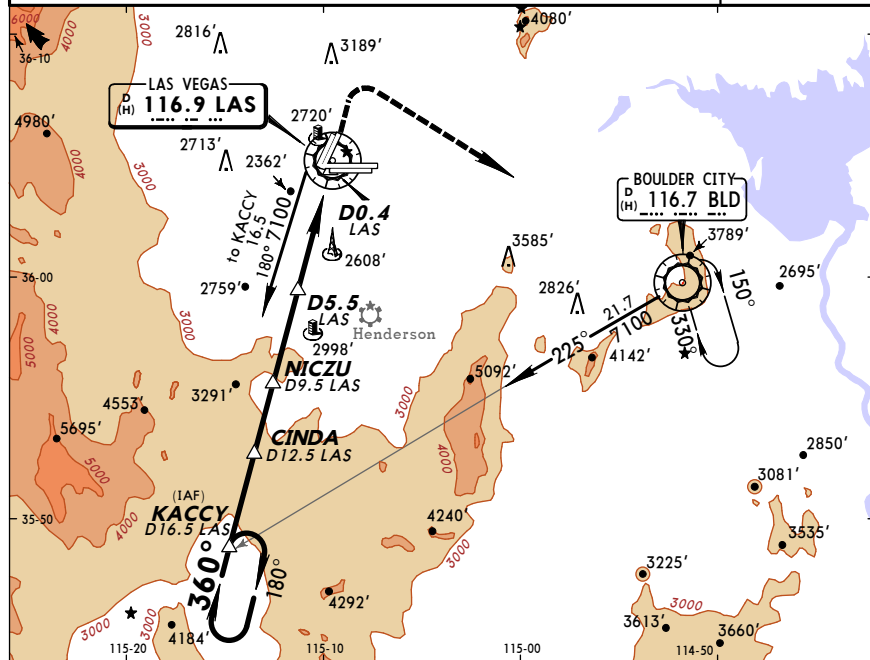
D-ATIS Arrival	LAS VEGAS Approach (R)	LAS VEGAS Tower		Ground	
132.4	125.02	Rwys 1L/R, 19L/R	Rwys 7L/R, 25L/R	East of Rwy 1R/19L	West of Rwy 1R/19L
		118.75	119.9	121.1	121.9

VOR LAS	Final Apch Crs	Minimum Alt	MDA(H)	Apt Elev
116.9	360°	NICZU 5400' (3219')	Refer to Minimums	2181'



**MISSED APCH:** Climb to 5000' then climbing RIGHT turn to 6000' direct BLD VOR and hold.

Alt Set: INCHES Trans level: FL 180 Trans alt: 18000' MSA LAS VOR



Lighting - Refer to Airport Chart	5000'	6000'	D	BLD 116.7
MAP at D0.4 LAS	↑	then RT		

CIRCLE-TO-LAND	
Max Kts	MDA(H)
A 90	3020' (839') - 1
B 120	3020' (839') - 1 1/4
C 140	3020' (839') - 2 1/2
D 165	3020' (839') - 2 3/4

BRIEFING STRIP

TERPS